

ELIZABETH CITY STATE UNIVERSITY

# FACT BOOK

## 2021 - 2022



## Table Contents

Introduction.....	4
Historical Highlights.....	5
Founding.....	5
Early Leadership.....	5
Continued Growth.....	5
Today.....	5
Historic Location.....	8
Mission Statement.....	9
Vision Statement.....	9
Institutional Goals.....	10
Memberships.....	12
Accreditations.....	13
Board of Trustees (2021 – 2022).....	14
Organizational Structure.....	15
Important Telephone Numbers.....	15
Application, Acceptances, & Enrollees.....	16
New Freshmen High School GPA.....	17
New Freshmen High School Class Rank.....	17
Completed Applications & Acceptance from 21 NENC Counties.....	18
Profile of Enrolled New Freshmen (Fall).....	19
Profile of Enrolled New Freshmen (Spring).....	20
Profile of Enrolled New Transfers (Fall).....	21
Profile of Enrolled New Transfers (Spring).....	22
Profile of Enrolled Undergraduates (Fall).....	23
Profile of Enrolled Undergraduates (Spring).....	24
Profile of Enrolled Graduates (Fall).....	25
Profile of Enrolled Graduates (Spring).....	26
All Students by Classification (Fall and Spring).....	27
All Students by Majors.....	28
Enrollment by State Fall 2016-2020.....	30
Enrollment by Counties for North Carolina.....	32

Enrollment from 21 *NENC Counties .....	35
(New Freshmen) .....	35
Enrollment from 21 *NENC Counties .....	36
(New Transfers) .....	36
Enrollment from 21 *NENC Counties .....	37
(Undergraduates) .....	37
Summer School Profile of Enrolled Students .....	38
(Undergraduates) .....	38
Summer School Profile of Enrolled Students .....	39
(Graduates).....	39
Headcount by Total Student Credit Hours .....	40
(Undergraduates) .....	40
Headcount by Total Student Credit Hours .....	41
(Graduate Students) .....	41
Student Credit Hours by Category & Residence Status .....	42
Degrees Conferred by Departments.....	43
Characteristics of Degrees Conferred .....	44
Retention Rates .....	45
Graduation Rates .....	45
Full-Time Faculty & Staff by Occupational Activity.....	46
Full-Time Instructional Faculty by Highest Earned Degree .....	47
Full-Time Instructional Faculty by Academic Rank .....	47
Full-Time Instructional Faculty by Tenure Status.....	47
Full-Time Instructional Faculty by Ethnicity .....	48
Financial Summary (Revenue) .....	49
Financial Summary (Expenditures) .....	52
Facilities.....	52

## Introduction

The Elizabeth City State University (ECSU) Fact Book is an annual publication that provides official statistical information about various aspects of the university's operations. We believe this document will serve as a valuable reference and resource tool for research and planning to our campus community and the public. Information presented in the Fact Book is representative of mandated reports submitted and approved by the University of North Carolina System Office, unless otherwise noted.

In continuing our efforts to provide timely information, staff in the Office of Institutional Effectiveness, Research, and Planning is committed to refining this document each year. Therefore, your comments and suggestions are important to us for future improvements. Please do not hesitate to send comments and suggestions to me at ([fmokanda@ecsu.edu](mailto:fmokanda@ecsu.edu)) or complete our survey [https://ecsu.iad1.qualtrics.com/jfe/form/SV\\_7TVkeHeuqkIo7Rk](https://ecsu.iad1.qualtrics.com/jfe/form/SV_7TVkeHeuqkIo7Rk)

Thank you very much,

Dr. Fred Okanda, Director  
Office of Institutional Effectiveness, Research, and Assessment

## Historical Highlights

### Founding

On March 3, 1891, **Hugh Cale**, an African-American representative in the N.C. General Assembly from Pasquotank County, sponsored House Bill 383, which established a normal (teaching) school for "teaching and training teachers of the colored race to teach in the common schools of North Carolina." The bill passed, and the origin of Elizabeth City State University was born.

### Early Leadership

The first leader, **Peter W. Moore**, was called a Principal (subsequent leaders would be called President, then Chancellor). Moore served as Principal and then President until his retirement as President, Emeritus, on July 1, 1928. During his tenure, enrollment increased from 23 to 355 and the faculty from two to 15 members.

During the tenure of the second president, **John Henry Bias**, the institution was elevated from a two-year normal school to a four-year teachers college (1937). Two years later, the institution's name was officially changed to **Elizabeth City Teachers College** on March 30, 1939. The growth and elevation to teachers college changed the mission to include training elementary school principals for rural and city schools. The first Bachelor of Science degrees in elementary education were awarded in May of 1939.

### Continued Growth

Between 1959 and 1963, the institution became more than a teaching college, adding 11 academic majors to the original elementary education major. In 1961, the college joined the Southern Association of Colleges and Schools accrediting group (SACS) and maintains its accreditation with that body to the present. In 1963, the N.C. General Assembly changed the institution's name from Elizabeth City State Teachers College to Elizabeth City State College and on July 1, 1969, the college became **Elizabeth City State University**. In 1971, the General Assembly redefined the University of North Carolina system with 16 public institutions, including ECSU. Together, those institutions became constituents of The University of North Carolina (July 1972).

### Today

*Academics.* Currently ECSU offers over 30 academic programs of study. From business to music to aviation and education, ECSU prepares students to compete in the global work force. We achieve our commitment to the highest quality education by maintaining a rigorous focus on academic excellence through liberal arts programs and using innovative and flexible technology-based instruction models to enhance our signature areas: integrating technology with education, improving human health and wellness, and advancing the natural and aviation sciences. As of May 2018, undergraduate and/or graduate degrees have been conferred upon more than 20,000 students.

*Rankings.* Over the years, the university fared well among publications that rank institutions. ECSU has earned national acclaim for its advancements: U.S. News and World Report ranked ECSU as the #3 Top Public School in the Regional College South for its 2020 Best Colleges list, #7 for Top Performers in Social Mobility, #26 for Best Regional College South, and #28 Historically Black Colleges and Universities. Washington Monthly ranked ECSU #13 Best Bang for the Buck School (2019). Best Historically Black Colleges ranked ECSU #6 (2020). CollegeNET, Inc. ranked ECSU #7 for Social Mobility Innovator (2019). ECSU was ranked a Top 5 Military Friendly® School for small public institutions (2020-21). Military Times ranked ECSU 84th in the nation for Best Bet for Vets among 134 universities (2020).

Recently, ECSU was ranked #7 among the top ten Top Public School in the Regional College South - 2021 Best Colleges by U.S. News and World Report, #11 among the top 20 Best Bang for the Buck colleges by Washington Monthly, #4 Best HBCU in nation by Black Colleges, #5 Military Friendly Schools for small public institutions and Best of the Best Top Veteran-Friendly Schools 2021.

On December 14, 2018, Dr. Karrie Dixon was named 12th Chief Executive Officer and 7th Chancellor of Elizabeth City State University.

Upon her arrival, Dr. Dixon quickly demonstrated her ability and interest in forging the University forward, giving special attention to increasing ECSU's enrollment. In 2018, first-year enrollment increased by 20%, total undergraduate enrollment increased by 19% and transfer enrollment increased by 57%. Since 2018 enrollment has climbed nearly 40%, in part because the North Carolina General Assembly authorized a special tuition-reducing program called NC Promise. She has worked vigorously to improve the institution academically, financially, and physically. Under her leadership, The UNC Board of Governors appropriated \$2.3M for repair & renovations for campus improvements, ECSU received a USDA loan, the university increased its fleet from 2 to 12 aircrafts for ECSU's signature aviation program. Also contributing has been the establishment of new degree programs: Digital Media, Unmanned Aircraft System and online programs-Interdisciplinary Studies, Homeland Security, and a Master of Education in Elementary Education.

Under Dr. Dixon's leadership, 2018 had the highest yield in grant awards since 2012. Over \$4 million in competitive grants were awarded. ECSU was awarded \$350,000 by the National Endowment for the Humanities Grant for Research and Cultural Center and \$500,000 NASA/BWF grant for funding outreach of STEM education. In 2019, Dr. Dixon launched her vision, "ECSU is Rising" and a new faculty and staff campaign, A.C.E.- Accountability, Commitment, and Excellence to encourage faculty and staff to work together for the future sustainability of the university. In 2020, Dr. Dixon launched a five-year strategic plan, "Forging Our Future." Dr. Dixon continues to receive numerous accolades that demonstrate her leadership. She has been named the Ten Most Dominant HBCU Leaders of 2020 and was awarded The Old North State Award by North Carolina Governor Roy Cooper.

Updated March 2022

Source: *University Relations & Marketing*

## Historic Location

Located in the historic Albemarle area near the mouth of the Pasquotank River, Elizabeth City State University offers students the opportunity to receive an excellent education while enjoying a wide variety of recreational and cultural amenities. Favored by a mild climate and proximity to the world renowned Outer Banks recreation area, ECSU has features that help make student living and learning both exciting and fulfilling. In addition, the university offers students a variety of social programs, cultural programs, religious and musical organizations and clubs. Honor and Recognition societies, as well as fraternities and sororities are also available to students. ECSU also has a variety of athletic sports events.

Students may also wish to take advantage of the historical sites in the greater Albemarle and southeastern Virginia areas. Williamsburg, Jamestown, Roanoke Island, Yorktown, several antebellum plantations, beaches and waterways are among sites within an easy drive from the campus.

United States Highways 17 and 158 make the city and the university easily accessible by automobile. City bus routes, hotels and motels are available to accommodate overnight visitors, and the university is just over an hour's drive from the Norfolk (Virginia) International Airport.

The university is situated on 114 acres which represent the campus proper. Another 68 acres comprise the former farm on Weeksville Road (N.C. 34); a 639-acre tract in Currituck County helps preserve the nation's diminishing wetlands and provides for educational research; and 35 acres serve residential or expansion purposes. There are also small sites in Utah and Virginia used, respectively, for geological instruction and institutional enhancement.

## Mission Statement

As a constituent institution of The University of North Carolina System, Elizabeth City State University offers baccalaureate, professional, and master's degrees for a diverse student body. Our mission is to promote economic, social, and environmental progress for the people of northeastern North Carolina, the state, and the nation.

We achieve our commitment to the highest quality education by maintaining a rigorous focus on academic excellence through liberal arts programs and using innovative and flexible technology-based instruction models to enhance our signature areas: integrating technology with education, improving human health and wellness, and advancing the natural and aviation sciences.

Through teaching, research, and community engagement, the institution's rich heritage and its current multicultural student-centered focus provide a firm foundation for its endeavors. It serves the needs and aspirations of individuals and society; producing graduates for leadership roles and life-long learning.

*Approved: Board of Governors for the University of North Carolina, November 2019*

## Vision Statement

Elizabeth City State University will be a premier public institution and a leading partner for economic, social, and environmental progress. We will be a destination institution that develops leaders who will make a positive difference now and in the future.



## **Institutional Goals:**

According to the 2020-2025 Strategic Plan, the goals of the University are as follows:

### **Goal 1 – Academic Excellence:**

Provide high-quality academic programs steeped in experiential learning that fully utilize our strengths as a university and enhance our region

#### **Goal 1 Objectives**

- 1.1 Implement real-life and applied research into the curriculum
- 1.2 Promote an academic environment centered on student success
- 1.3 Invest in faculty development to maximize excellence in teaching, research, and service
- 1.4 Expand our academic program offerings, services, and learning opportunities to align with community demand and meet the needs of employers
- 1.5 Expand the national prominence of our aviation program
- 1.6 Collaborate with regional K-12 local education agencies to enhance education and preparation quality and deliver best-practices

### **Goal 2 – Student Experience:**

Create transformative experiences for our students that support academic outcomes and build Viking spirit

#### **Goal 2 Objectives**

- 2.1 Prepare students for life through robust co-curricular and extra-curricular campus activities
- 2.2 Enhance the on-campus living experience
- 2.3 Enhance the off-campus life experience
- 2.4 Ensure student services align with student needs and expectations
- 2.5 Build a competitive athletic program that develops our student athletes into well-rounded leaders as well as brings recognition and pride to the university
- 2.6 Cultivate and promote our unique Viking culture and pride
- 2.7 Ensure our campus is diverse and inclusive for all students

### **Goal 3 – Sustainable Growth:**

Maximize our potential through improved enrollment processes and investment in recruitment, retention, and completion efforts

#### **Goal 3 Objectives**

- 3.1 Identify strategic opportunities for sustainable growth in new student population
- 3.2 Maximize retention, persistence, and graduation rates
- 3.3 Improve enrollment management practices and processes

### **Goal 4 – Institutional Advancement:**

Promote and progress the institution through the engagement of our students, alumni, and other stakeholders

**Goal 4 Objectives**

- 4.1 Cultivate and promote a campus-wide culture of service and giving to the university
- 4.2 Engage all alumni in meaningful and strategic ways
- 4.3 Implement an effective marketing and communication plan to increase visibility and promote successes
- 4.4 Redesign our fund development philosophy and infrastructure to enable transformative giving to the university
- 4.5 Prioritize engagement with the community and region to support development

**Goal 5 – Operational Excellence:**

Ensure sound and efficient university operations and enhance our customer service quality and delivery

**Goal 5 Objectives**

- 5.1 Review and streamline business processes to improve efficiency
- 5.2 Establish a university-wide culture of excellent customer service
- 5.3 Leverage technology to support growth
- 5.4 Develop and maintain facilities that support academic growth and regional advancement
- 5.5 Attract and retain talented faculty, staff, and administrators

**Goal 6 – Regional Development:**

Secure our position as a catalyst in regional economic, social, and environmental development and facilitate collaboration with industry and government to improve our region

**Goal 6 Objectives**

- 6.1 Build partnerships with government and industry to drive economic development
- 6.2 Promote and support faculty applied research and consulting
- 6.3 Grow community-based experiences and develop opportunities for community involvement

## Memberships

The university as a whole, or through components, has current memberships in various professional learned organizations. Memberships are held in the following:

American Council on Education  
 American Association of Colleges for Teacher Education  
 American Association of Higher Education American  
 Association of School Administrators American  
 Association of State Colleges and Universities American  
 Library Association  
 American Mathematical Society  
 American Political Science Association  
 Associated Collegiate Press  
 Association to Advance Collegiate School of Business  
 Association for General and Liberal Studies  
 Association of Institutional Research (AIR)  
 Association of International Educators  
 Association for Supervision and Curriculum Development  
 Association of College Administration Professionals  
 Association of Teacher Education Institutions Carolinas  
 Association of Collegiate Registrars and Admissions Officers  
 Central Intercollegiate Athletic Association (CIAA)  
 College Entrance Examination Board Colleges and University Personnel  
 Association Colleges and University Systems Exchange (CAUSE)  
 Council for the Advancement and Support of Education (CASE) Council  
 for Opportunity in Education  
 Eastern Communication Association  
 Intercollegiate Press  
 Mathematics Association of America  
 National Association for Equal Opportunity in Higher Education  
 National Association of College and University Attorneys  
 National Association of College and University Business Officers  
 National Association of Foreign Student Advisors  
 National Association of Industrial Technology (NAIT)  
 National Association of Student Aid Administrators  
 National Collegiate Athletic Association  
 National Communication Association National  
 Cooperative Education Association North  
 American Association of Summer Sessions  
 North Carolina Academy of Science  
 North Carolina Association for Institutional Research North  
 Carolina Association of Colleges for Teacher Education North  
 Carolina Association of Student Aid Administrators North  
 Carolina Association of Summer Sessions  
 North Carolina Cooperative Education Association  
 North Carolina Library Association North  
 Carolina Student Information System  
 Society for College and University Planning  
 Society for Human Resource Management  
 Southern Association of College and University Business Officers  
 Southern Association of Libraries  
 Southern Association of Student Aid Administrators  
 Student Information System Users University  
 Council on International Programs University of  
 North Carolina Exchange Programs

## Accreditations

Elizabeth City State University is accredited by the Southern Association of Colleges and Schools Commission on Colleges (SACSCOC) to award baccalaureate and masters degrees. Contact the Commission on Colleges at 1866 Southern Lane, Decatur, Georgia 30033-4098 or call 404-679-4500 for questions about the accreditation of Elizabeth City State University.

### **School of Education and Business**

**AACSB** - Association to Advance Collegiate Schools of Business

### **School of Science, Aviation, Health and Technology**

**ATMAE** - Association of Technology, Management, and Applied Engineering

### **School of Humanities and Social Sciences**

**CSWE** - Council on Social Work Education

**NASM** - National Association of Schools of Music

### **School of Education and Business**

**CAEP** - Council for the Accreditation of Educator Preparation

**NCATE** - National Council for Accreditation of Teacher Education

**NCDPI** - North Carolina Department of Public Instruction

**Board of Trustees (2021 – 2022)**

Dr. Stephanie D.B. Johnson, Chairman

Tiffany Jones, Vice Chairman

Chris Evans, Secretary

Phyllis N. Bosomworth

Jimmy Chambers, President SGA *Ex-officio*

Bishop Kim W. Brown

James R. Copland IV

Andy Culpepper

Stephen Friedrich

Jan King Robinson

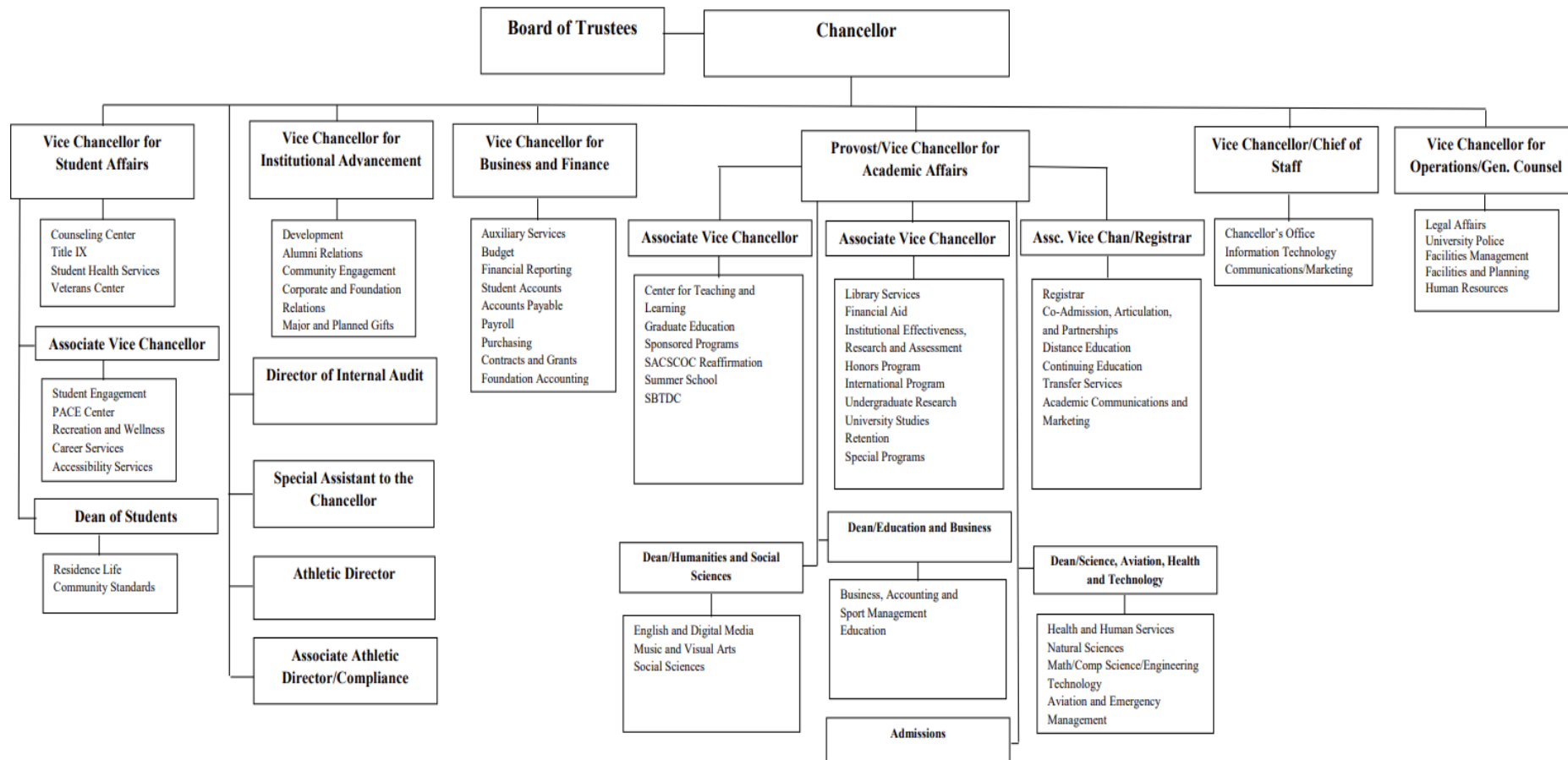
Johnny Tillett

Paul Tine

Justin Waddell

## Organizational Structure

**Elizabeth City State University Organizational Structure**



November 2019

## Important Telephone Numbers

Division	(252) 335 Extension	Fax
Admission	3305	3537
Alumni	3224	3489
Athletics	3891	3627
Campus Police	3266	3689
Chancellor's Office	3228	3731
Community Outreach	3633	3735
Dining Services	3660	3817
Director of Financial Aid	3283	3716
Director of Housing & Residence Life	3712	3090
Enrollment Management	8722	8779
Graduate Programs	3947	3146
Honors Programs	3294	3792
Human Resources	3251	3415
Internal Auditor	3561	3411
Library	3586	3446
Registrar	3300	3729
University Relations & Marketing	3103	3769
Vice Chancellor of Academic Affairs Provost's Office	3291	3493
School of Humanities & Social Sciences	3945	3469
School of Education and Business	3485	3491
School of Science, Aviation, Health and Technology	3846	3760
Vice Chancellor of Business and Finance	3320	3539
Vice Chancellor of Institutional Advancement	3225	3542
Dean of Student Affairs	3277	3502

## Application, Acceptances, & Enrollees

### New Freshmen

Fall	Applied	Accepted		Enrolled	
	#	#	%	#	%
<b>2017</b>	2695	1614	59.9	349	21.6
<b>2018</b>	2486	1474	59.0	418	28.4
<b>2019</b>	2549	1643	65.6	385	23.0
<b>2020</b>	2572	1924	74.8	364	18.9
<b>2021</b>	3373	2624	77.8	324	12.4

### New Transfers

Fall	Applied	Accepted		Enrolled	
	#	#	%	#	%
<b>2017</b>	246	200	81.0	117	59.0
<b>2018</b>	392	315	80.4	184	58.4
<b>2019</b>	338	300	88.8	158	52.7
<b>2020</b>	379	346	91.3	202	58.4
<b>2021</b>	371	345	92.2	197	57.1



### New Freshmen High School GPA

Fall	2017	2018	2019	2020	2021
1.00<1.49	0	0	0	0	0
1.50<1.99	0	0	0	0	2
2.00<2.49	6	11	12	14	13
2.50<2.99	119	151	146	147	128
3.00<3.49	137	139	129	106	82
3.50<4.00	86	11	94	91	96
Average GPA	3.21	3.20	3.14	3.13	3.20
Missing GPA	1	3	4	6	3

### New Freshmen High School Class Rank

Fall		2017	2018	2019	2020	2021
# of New Freshmen (for those reporting class rank)	Top 20 <sup>th</sup>	56	72	53	62	57
	Second 20 <sup>th</sup>	11	109	99	75	60
	Third 20 <sup>th</sup>	92	120	103	109	94
	Fourth 20 <sup>th</sup>	53	65	68	58	46
	Bottom 20 <sup>th</sup>	14	11	60	58	67
Number of New Freshmen	# With Class Rank	325	377	383	362	324
	# Without Class Rank	24	41	2	2	0
	Total New Freshmen	349	418	385	364	324

### Completed Applications & Acceptance from 21 NENC Counties

Northeastern North Carolina Counties	2019F		2020F		2021F	
	Applied	Accepted	Applied	Accepted	Applied	Accepted
Beaufort	27	13	33	28	17	10
Bertie	50	25	42	28	29	22
Camden	37	28	29	25	25	20
Chowan	54	32	36	27	28	22
Currituck	40	32	44	42	38	30
Dare	14	12	17	12	11	9
Edgecombe	78	37	71	47	59	44
Franklin	22	11	28	25	23	16
Gates	17	8	34	26	22	17
Halifax	123	66	113	77	77	59
Hertford	88	40	73	47	73	60
Hyde	3	2	4	3	4	3
Martin	1	0	0	0	0	0
Nash	61	27	65	51	63	48
Northampton	35	16	38	25	18	15
Pasquotank	238	183	162	145	180	153
Perquimans	29	18	33	25	34	29
Tyrrell	18	9	8	7	5	5
Vance	59	32	55	44	62	49
Warren	21	10	11	7	11	10
Washington	37	22	35	26	41	30
<b>Total</b>	<b>1052</b>	<b>623</b>	<b>931</b>	<b>713</b>	<b>841</b>	<b>651</b>
<b>Other NC applications</b>	<b>1449</b>	<b>755</b>	<b>1628</b>	<b>1231</b>	<b>1626</b>	<b>1140</b>
<b>Out of state applications</b>	<b>589</b>	<b>316</b>	<b>670</b>	<b>495</b>	<b>1542</b>	<b>1002</b>
<b>Grand Total</b>	<b>3090</b>	<b>1694</b>	<b>3229</b>	<b>2439</b>	<b>4031</b>	<b>2818</b>

### Profile of Enrolled New Freshmen (Fall)

<b>Enrollment Characteristics</b>	<b>2017</b>	<b>2018</b>	<b>2019</b>	<b>2020</b>	<b>2021</b>
Headcount	349	418	385	364	324
FTE	343.50	417.50	383.30	362.30	324.0
Full-time	341	416	381	360	324
Part-time	8	2	4	4	0
Full-time %	97.71%	99.52%	98.96%	98.90%	100.00%
Part-time %	2.29%	0.48%	1.04%	1.10%	0%
Female	197	242	227	208	183
Male	152	176	158	156	141
Female %	56.45%	57.89%	58.96%	57.14%	56.48%
Male %	43.55%	42.11%	41.04%	42.86%	43.52%
In-State	319	299	307	274	218
Out-of-State	30	119	78	90	106
In-State %	91.40%	71.53%	79.74%	75.27%	67.28%
Out-of-State %	8.60%	28.47%	20.26%	24.73%	32.72%
American Indian or Alaskan Native	1	2	0	0	1
Asian	6	0	2	0	1
Black or African American	259	303	289	263	242
Hispanics	9	22	19	24	14
Native Hawaiian or Other Pacific Islander	2	0	0	0	0
Non-Resident Alien	0	2	1	0	1
Race and Ethnicity Unknown	13	11	8	6	3
Two or more races	17	25	23	26	22
White	42	53	43	45	40
American Indian or Alaskan Native %	0.29%	0.48%	0.52%	0%	0.31%
Asian %	1.72%	0%	0%	0%	0.31%
Black or African American %	74.21%	72.49%	75.06%	72.25%	74.69%
Hispanics %	2.58%	5.26%	4.94%	6.59%	4.32%
Native Hawaiian or Other Pacific Islander %	0.57%	0%	0%	0%	0%
Non-Resident Alien %	0%	0.48%	0.26%	0%	0.31%
Race and Ethnicity Unknown %	3.72%	2.63%	2.08%	1.65%	0.93%
Two or more races %	4.87%	5.98%	5.97%	7.14%	6.79%
White %	12.03%	12.68%	11.17%	12.36%	12.35%
Boarding	255	317	300	263	253
Commuter	94	101	85	101	71
Boarding	73.07%	75.84%	77.92%	72.25%	78.09%
Commuter	26.93%	24.16%	22.08%	27.75%	21.91%
Avg. SAT Read	434	425	320	311	502
Avg. SAT Math	439	419	329	306	474
Avg. SAT Writ	434	405	385		
Avg. SAT Total	1,307	1,249	1,034		976

### Profile of Enrolled New Freshmen (Spring)

<b>Enrollment Characteristics</b>	<b>2018</b>	<b>2019</b>	<b>2020</b>	<b>2021</b>	<b>2022</b>
Headcount	12	24	20	18	23
FTE	12.00	24.00	19.50	18.00	22.50
Full-time	12	24	19	18	22
Part-time	0	0	1	0	1
Full-time %	100%	100%	95.00%	100.00%	95.65%
Part-time %	0%	0%	5.00%	0%	4.35%
Female	8	13	12	7	13
Male	4	11	8	11	10
Female %	66.67%	54.17%	60.00%	38.89%	56.52%
Male %	33.33%	45.83%	40.00%	61.11%	43.48%
In-State	11	20	17	14	15
Out-of-State	1	4	3	4	8
In-State %	91.67%	83.33%	85.00%	77.78%	65.22%
Out-of-State %	8.33%	16.67%	15.00%	22.22%	34.78%
American Indian or Alaskan Native	0	0	0	0	0
Asian	0	0	0	0	1
Black or African American	10	15	12	10	13
Hispanics	1	1	3	3	1
Native Hawaiian or Other Pacific Islander	0	0	1	0	0
Non-Resident Alien	0	0	0	0	1
Race and Ethnicity Unknown	0	1	0	0	0
Two or more races	0	3	1	0	3
White	1	4	3	5	4
American Indian or Alaskan Native %	0.00%	0.00%	0.00%	0.00%	0.00%
Asian %	0.00%	0.00%	0.00%	0.00%	4.35%
Black or African American %	83.33%	62.50%	60.00%	55.56%	56.52%
Hispanics %	8.33%	4.17%	15.00%	16.67%	4.35%
Native Hawaiian or Other Pacific Islander %	0%	0%	5.00%	0%	0%
Non-Resident Alien %	0%	0%	0%	0%	4.35%
Race and Ethnicity Unknown %	0%	4.17%	0%	0%	0%
Two or more races %	0%	12.50%	5.00%	0%	13.04%
White %	8.33%	16.67%	15.00%	27.78%	17.39%
Boarding	9	15	14	14	8
Commuter	3	9	6	4	15
Boarding	75.00%	62.50%	70.00%	77.78%	34.78%
Commuter	25.00%	37.50%	30.00%	22.22%	65.22%
Avg. SAT Read	523	472	330	650	
Avg. SAT Math	494	444	370	700	
Avg. SAT Writ	390	402			
Avg. SAT Total	1,200	1,318		1,350	

### Profile of Enrolled New Transfers (Fall)

<b>Enrollment Characteristics</b>	<b>2017</b>	<b>2018</b>	<b>2019</b>	<b>2020</b>	<b>2021</b>
Headcount	117	184	173	202	196
FTE	111.30	178.00	165.00	185.80	179.00
Full-time	106	169	155	166	158
Part-time	11	15	18	36	38
Full-time %	90.60%	91.85%	89.60%	82.18%	80.61%
Part-time %	9.40%	8.15%	10.40%	17.82%	19.39%
Female	69	110	96	122	117
Male	48	74	77	80	79
Female %	58.97%	59.78%	55.49%	60.40%	59.69%
Male %	41.03%	40.22%	44.51%	39.60%	40.31%
In-State	97	122	134	162	143
Out-of-State	20	62	39	40	53
In-State %	82.91%	66.30%	77.46%	80.20%	72.96%
Out-of-State %	17.09%	33.70%	22.54%	19.80%	27.04%
American Indian or Alaskan Native	0	0	1	1	1
Asian	1	0	1	1	1
Black or African American	63	118	93	118	113
Hispanics	7	7	6	8	13
Native Hawaiian or Other Pacific Islander	1	0	0	0	0
Non-Resident Alien	0	2	4	2	2
Race and Ethnicity Unknown	3	2	3	3	4
Two or more races	4	9	10	7	10
White	38	46	55	62	52
American Indian or Alaskan Native %	0%	0%	0.58%	0.50%	0.51%
Asian %	0.85%	0%	0.58%	0.50%	0.51%
Black or African American %	53.85%	64.13%	53.76%	58.42%	57.65%
Hispanics %	5.98%	3.80%	3.47%	3.96%	6.63%
Native Hawaiian or Other Pacific Islander %	0.85%	0%	0%	0%	0%
Non-Resident Alien %	0%	1.09%	2.31%	0.99%	1.02%
Race and Ethnicity Unknown %	2.56%	1.09%	1.73%	1.49%	2.04%
Two or more races %	3.42%	4.89%	5.78%	3.47%	5.10%
White %	32.48%	25.00%	31.79%	30.69%	26.53%
Boarding	36	73	59	48	70
Commuter	81	111	114	152	126
Boarding %	30.77%	39.67%	34.10%	23.76%	35.71%
Commuter %	69.23%	60.33%	65.90%	76.24%	64.29%
Avg. SAT Read	370	440	516	403	443
Avg. SAT Math	356	386	487	403	430
Avg. SAT Writ	341	420	354	397	350
Avg. SAT Total	1,067	1,246	1,357	1,203	1,223

### Profile of Enrolled New Transfers (Spring)

<b>Enrollment Characteristics</b>	<b>2018</b>	<b>2019</b>	<b>2020</b>	<b>2021</b>	<b>2022</b>
Headcount	38	49	67	88	75
FTE	34.25	44.25	63.00	77.25	69.00
Full-time	31	39	57	65	61
Part-time	7	10	10	23	14
Full-time %	81.58%	79.59%	85.07%	73.86%	81.33%
Part-time %	18.42%	20.41%	14.93%	26.14%	18.67%
Female	23	29	42	54	43
Male	15	20	25	34	32
Female %	60.53%	59.18%	62.69%	61.36%	57.33%
Male %	39.47%	40.82%	37.31%	38.64%	42.67%
In-State	30	37	55	74	50
Out-of-State	8	12	12	14	25
In-State %	78.95%	75.51%	82.09%	84.09%	66.67%
Out-of-State %	21.05%	24.49%	17.91%	15.91%	33.33%
American Indian or Alaskan Native	0	1	1	2	0
Asian	0	0	0	0	0
Black or African American	19	21	32	43	54
Hispanics	2	2	5	5	1
Native Hawaiian or Other Pacific Islander	0	0	0	0	0
Non-Resident Alien	1	1	3	1	2
Race and Ethnicity Unknown	1	0	0	0	1
Two or more races	4	2	3	4	1
White	11	22	23	33	16
American Indian or Alaskan Native %	0%	2.04%	1.49%	2.27%	0%
Asian %	0%	0%	0%	0%	0%
Black or African American %	50.00%	42.86%	47.76%	48.86%	72.00%
Hispanics %	5.26%	4.08%	7.46%	5.68%	1.33%
Native Hawaiian or Other Pacific Islander %	0%	0%	0%	0%	0%
Non-Resident Alien %	2.63%	2.04%	4.48%	1.14%	2.67%
Race and Ethnicity Unknown %	2.63%	0%	0%	0%	1.33%
Two or more races %	10.53%	4.08%	4.48%	4.55%	1.33%
White %	28.95%	44.90%	34.33%	37.50%	21.33%
Boarding	11	10	11	13	18
Commuter	27	39	56	75	57
Boarding %	28.95%	20.41	16.42%	14.77%	24.00%
Commuter %	71.05%	79.59%	83.58%	85.23%	76.00%
Avg. SAT Read	407	417	470	437	360
Avg. SAT Math	422	390	433	400	367
Avg. SAT Writ	395	470			370
Avg. SAT Total	1,223	1,380			1,097

### Profile of Enrolled Undergraduates (Fall)

<b>Enrollment Characteristics</b>	<b>2017</b>	<b>2018</b>	<b>2019</b>	<b>2020</b>	<b>2021</b>
Headcount	1,368	1,638	1,697	1,912	1,957
FTE	1,262.00	1,526.00	1,604.00	1,754.00	1,778.00
Full-time	1,179	1,425	1,518	1,623	1,627
Part-time	189	213	179	289	330
Full-time %	86.18%	87.00%	89.45%	84.88%	83.14%
Part-time %	13.82%	13.00%	10.55%	15.12%	16.86%
Female	758	940	1,005	1,129	1,171
Male	698	692	783	783	786
Female %	55.41%	57.39%	59.22%	59.05%	59.84%
Male %	44.59%	42.61%	40.78%	40.95%	40.16%
In-State	1,255	1,354	1,393	1,549	1,500
Out-of-State	113	284	304	363	457
In-State %	91.74%	82.66%	82.09%	81.01%	76.65%
Out-of-State %	8.26%	17.34%	17.91%	18.99%	23.35%
American Indian or Alaskan Native	5	8	6	5	10
Asian	12	10	11	10	9
Black or African American	939	1,140	1,175	1,308	1,338
Hispanics	45	68	72	92	92
Native Hawaiian or Other Pacific Islander	5	2	1	2	3
Non-Resident Alien	1	5	10	13	11
Race and Ethnicity Unknown	69	57	37	41	48
Two or more races	33	60	81	97	102
White	259	288	304	344	344
American Indian or Alaskan Native %	0.37%	0.49%	0.35%	0.26%	0.51%
Asian %	0.88%	0.61%	0.65%	0.52%	0.46%
Black or African American %	68.64%	69.60%	69.24%	68.41%	68.37%
Hispanics %	3.29%	4.15%	4.24%	4.81%	4.70%
Native Hawaiian or Other Pacific Islander %	0.37%	0.12%	0.06%	0.10%	0.15%
Non-Resident Alien %	0.07%	0.31%	0.59%	0.68%	0.56%
Race and Ethnicity Unknown %	5.04%	3.48%	2.18%	2.14%	2.45%
Two or more races %	2.41%	3.66%	4.77%	5.07%	6.21%
White %	18.93%	17.58%	17.91%	17.99%	17.58%
Boarding	694	841	900	769	939
Commuter	674	797	797	1,143	1,018
Boarding %	50.73%	51.34%	53.03%	40.22%	47.98%
Commuter %	49.27%	48.66%	46.97%	59.78%	52.02%
Avg. SAT Read	425	425	225	200	423
Avg. SAT Math	428	419	232	201	416
Avg. SAT Writ	399	379	380	397	388
Avg. SAT Total	1,252	1,223	837	798	924
Avg. ECSU GPA	2.81	2.77	2.86	2.98	2.93
Avg. Age	22.9	22.7	22.5	22.9	23.9

### Profile of Enrolled Undergraduates (Spring)

<b>Enrollment Characteristics</b>	<b>2018</b>	<b>2019</b>	<b>2020</b>	<b>2021</b>	<b>2022</b>
Headcount	1,239	1,454	1,594	1,794	1,812
FTE	1,128.00	1,356.00	1,486.00	1,625.00	1,626.00
Full-time	1,041	1,270	1,387	1,498	1,473
Part-time	198	184	207	296	339
Full-time %	84.02%	87.35%	87.01%	83.50%	81.29%
Part-time %	15.98%	12.65%	12.99%	16.50%	18.71%
Female	696	849	919	1,059	1,087
Male	543	605	675	735	725
Female %	56.17%	58.39%	57.65%	59.03%	59.99%
Male %	43.83%	41.61%	42.35%	40.97%	40.01%
In-State	1,138	1,207	1,321	1,435	1,363
Out-of-State	101	247	273	359	449
In-State %	91.85%	83.01%	82.87%	79.99%	75.22%
Out-of-State %	8.15%	16.99%	17.13%	20.01%	24.78%
American Indian or Alaskan Native	5	7	4	8	8
Asian	12	11	10	10	7
Black or African American	820	997	1,088	1,203	1,242
Hispanics	47	61	69	86	83
Native Hawaiian or Other Pacific Islander	3	1	2	2	2
Non-Resident Alien	1	5	13	13	14
Race and Ethnicity Unknown	64	44	37	45	37
Two or more races	32	60	82	94	92
White	255	268	289	333	327
American Indian or Alaskan Native %	0.4%	0.48%	0.25%	0.45%	0.44%
Asian %	0.97%	0.76%	0.63%	0.56%	0.39%
Black or African American %	66.18%	68.57%	68.26%	67.06%	68.54%
Hispanics %	3.79%	4.20%	4.33%	4.79%	4.58%
Native Hawaiian or Other Pacific Islander %	0.24%	0.07%	0.13%	0.11%	0.11%
Non-Resident Alien %	0.08%	0.34%	0.82%	0.72%	0.77%
Race and Ethnicity Unknown %	5.17%	3.03%	2.32%	2.51%	2.04%
Two or more races %	2.58%	4.13%	5.14%	5.24%	5.08%
White %	20.58%	18.43%	18.13%	18.56%	18.05%
Boarding	596	752	828	673	884
Commuter	643	702	766	1,121	928
Boarding %	48.10%	51.72%	51.94%	37.51%	48.79%
Commuter %	51.90%	48.28%	48.06%	62.49%	51.21%
Avg. SAT Read	428	411	406	414	412
Avg. SAT Math	431	404	419	408	426
Avg. SAT Writ	394	368	411	334	388
Avg. SAT Total	1,220	1,168	1,248	1,156	1,200
Avg. ECSU GPA	2.81	2.79	2.83	2.98	2.83
Avg. Age	22.8	22.7	22.7	23.6	24.2



### Profile of Enrolled Graduates (Fall)

<b>Enrollment Characteristics</b>	<b>2017</b>	<b>2018</b>	<b>2019</b>	<b>2020</b>	<b>2021</b>
Headcount	43	40	75	90	97
FTE	36.00	31.00	62.50	69.00	78.00
Full-time	16	8	26	27	36
Part-time	27	32	49	63	61
Full-time %	37.21%	20.00%	34.67%	30.00%	37.11%
Part-time %	62.79%	80.00%	65.33%	70.00%	62.89%
Female	34	30	57	66	76
Male	9	10	18	24	21
Female %	79.07%	75.00%	76.00%	73.33%	78.35%
Male %	20.93%	25.00%	24.00%	26.67%	21.65%
In-State	40	38	70	81	87
Out-of-State	3	2	5	9	10
In-State %	93.02%	95.00%	93.33%	90.00%	89.69%
Out-of-State %	6.98%	5.00%	6.67%	10.00%	10.31%
American Indian or Alaskan Native	0	0	0	1	0
Asian	0	0	0	1	1
Black or African American	24	20	39	39	44
Hispanics	1	0	3	3	4
Race and Ethnicity Unknown	9	14	19	23	27
Two or more races					1
White	9	6	14	23	20
American Indian or Alaskan Native %	0%	0%	0%	1.11%	0%
Asian %	0%	0%	0%	1.11%	1.03%
Black or African American %	55.81%	50.00%	52.00%	43.33%	45.36%
Hispanics %	2.33%	0%	4.00%	3.33%	4.12%
Race and Ethnicity Unknown %	20.93%	35.00%	25.33%	25.56%	27.84%
Two or more races %					1.03%
White %	20.93%	15.00%	18.67%	25.56%	20.62%
Boarding	10	12	8	3	3
Commuter	33	28	67	87	94
Boarding %	23.26%	30.00%	10.67%	3.33%	3.09%
Commuter %	76.74%	70.00%	89.33%	96.67%	96.91%
Avg. ECSU GPA	3.60	3.75	3.60	3.61	3.57
Avg. Age	33.7	33.2	33.3	33.3	33.9

### Profile of Enrolled Graduates (Spring)

<b>Enrollment Characteristics</b>	<b>2018</b>	<b>2019</b>	<b>2020</b>	<b>2021</b>	<b>2022</b>
Headcount	39	54	76	90	85
FTE	29.50	44.50	66.50	70.50	67.50
Full-time	3	17	41	24	25
Part-time	36	37	35	66	60
Full-time %	7.69%	31.48%	53.95%	26.67%	29.41%
Part-time %	92.31%	68.52%	46.05%	73.33%	70.59%
Female	31	39	58	68	68
Male	8	15	18	22	17
Female %	79.49%	72.22%	76.32%	75.56%	80.00%
Male %	20.51%	27.78%	23.68%	24.44%	20.00%
In-State	36	51	71	79	77
Out-of-State	3	3	5	11	8
In-State %	92.31%	94.44%	93.42%	87.78%	90.59%
Out-of-State %	7.69%	5.56%	6.58%	12.22%	9.41%
American Indian or Alaskan Native	0	0	0	0	0
Asian	0	0	0	1	1
Black or African American	21	26	36	42	35
Hispanics	0	1	3	3	4
Non-Resident Alien	0	2	0	0	0
Race and Ethnicity Unknown	7	19	20	23	25
Two or more races	0	0	0	0	2
White	11	6	17	21	18
American Indian or Alaskan Native	0%	0%	0%	0%	0%
Asian %	0%	0%	0%	1.11%	1.18%
Black or African American %	53.85%	48.15%	47.37%	46.67%	41.18%
Hispanics %	0%	1.85%	3.95%	3.33%	4.71%
Non-Resident Alien %	0%	3.70%	0%	0%	0%
Race and Ethnicity Unknown %	17.95%	35.19%	26.32%	25.56%	29.41%
Two or more races %	0%	0%	0%	0%	2.35%
White %	28.21%	11.11%	22.37%	23.33%	21.18%
Boarding	6	13	8	4	2
Commuter	33	41	68	86	83
Boarding %	15.38%	24.07%	10.53%	4.44%	2.35%
Commuter %	84.62%	75.93%	89.47%	95.56%	97.65%
Avg. ECSU GPA	3.70	3.47	3.52	3.61	3.73
Avg. Age	33.9	33.3	33.3	32.6	33.5

### All Students by Classification (Fall and Spring)

	<b>2017F</b>	<b>2018F</b>	<b>2019F</b>	<b>2020F</b>	<b>2021F</b>
<b>New Freshman</b>	34	41	385	364	324
<b>Other Freshman</b>	9	8	180	181	266
<b>Sophomores</b>	96	16	424	475	389
<b>Juniors</b>	25	0	331	402	439
<b>Seniors</b>	8	35	313	402	446
<b>Unclassified</b>	24	0	65	88	93
<b>Graduates</b>	1	28	74	90	97
<b>TOTAL</b>	<b>1411</b>	<b>1678</b>	<b>1772</b>	<b>2002</b>	<b>2054</b>

	<b>2018S</b>	<b>2019S</b>	<b>2020S</b>	<b>2021S</b>	<b>2022S</b>
<b>New Freshman</b>	23	23	25	18	23
<b>Other Freshman</b>	311	38	354	400	352
<b>Sophomores</b>	225	5	416	400	385
<b>Juniors</b>	238	33	388	434	443
<b>Seniors</b>	356	9	342	443	458
<b>Unclassified</b>	88	31	69	99	139
<b>Graduates</b>	37	4	76	90	85
<b>TOTAL</b>	<b>1,278</b>	<b>1,508</b>	<b>1,670</b>	<b>1,884</b>	<b>1,897</b>

### All Students by Majors Fall

Department	Major	2017	2018	2019	2020	2021
Aviation and Emergency Management	Aviation Science	54	68	98	127	153
	Emergency Management		4	10	22	24
	Unmanned Aircraft Systems			1	3	7
	<b>Total</b>	<b>54</b>	<b>72</b>	<b>109</b>	<b>152</b>	<b>184</b>
Business Accounting and Sport Management	Accounting	31	36	35	45	44
	Business Administration	165	196	205	219	232
	Sport Management	47	52	58	66	61
	<b>Total</b>	<b>243</b>	<b>284</b>	<b>298</b>	<b>330</b>	<b>337</b>
Education	Birth through Kindergarten	32	30	31	36	36
	Elementary Education	57	66	58	72	75
	Elementary Education (M)	3	3	36	49	52
	Middle Grades Education	5				
	School Administration	18	17	18	16	21
	Special Education, General	6	12	15	18	16
	<b>Total</b>	<b>121</b>	<b>128</b>	<b>158</b>	<b>191</b>	<b>200</b>
English and Digital Media	Communication Studies	37	40	23	9	2
	Digital Media Arts			11	30	31
	English	26	25	29	31	28
	<b>Total</b>	<b>63</b>	<b>65</b>	<b>63</b>	<b>70</b>	<b>61</b>
Health and Human Studies	Kinesiology	5	80	104	129	147
	Pharmaceutical Science	34	42	40	35	35
	Physical Education and Health	91	19	3	1	
	Psychology	80	104	97	94	106
	Social Work	66	82	107	125	97
	<b>Total</b>	<b>276</b>	<b>327</b>	<b>351</b>	<b>384</b>	<b>385</b>
Mathematics Computer Science and Engineering Technology	Computer Information Science	59	56	52	60	67
	Engineering Technology	47	53	57	54	57
	Industrial Technology	2				
	Mathematics	17	17	11	8	5
	Mathematics (G)	9	11	13	14	11
	<b>Total</b>	<b>134</b>	<b>137</b>	<b>133</b>	<b>136</b>	<b>140</b>
Music and Visual Arts	Graphic Design	36	43	43	57	58
	Music	31	45	42	43	35
	<b>Total</b>	<b>67</b>	<b>88</b>	<b>85</b>	<b>100</b>	<b>93</b>
Natural Sciences	Biology	136	161	152	147	125
	Biology (G)	13	9	8	11	13
	Chemistry	15	15	13	14	5
	Sustainability Studies					1
	<b>Total</b>	<b>164</b>	<b>185</b>	<b>173</b>	<b>172</b>	<b>143</b>
Social Sciences	Criminal Justice	116	133	156	178	158

<b>Department</b>	<b>Major</b>	<b>2017</b>	<b>2018</b>	<b>2019</b>	<b>2020</b>	<b>2021</b>
	History	21	31	31	24	21
	Homeland Security			1	22	42
	Interdisciplinary Studies	2	64	81	82	119
	Political Science	4	1			
	Sociology	27	17	9	2	
	<b>Total</b>	<b>170</b>	<b>246</b>	<b>278</b>	<b>308</b>	<b>340</b>
Undeclared/Special/Certification	Certification	7	13	7	15	34
	Continuing Education		1			
	Special	53	52	42	67	77
	Special Graduate				1	1
	Transient Study	1				
	UNC Exchange	5	19	22	45	37
	Undecided	53	61	53	31	21
	<b>Total</b>	<b>119</b>	<b>146</b>	<b>124</b>	<b>159</b>	<b>170</b>
<b>Grand Total</b>		<b>1411</b>	<b>1678</b>	<b>1772</b>	<b>2002</b>	<b>2054</b>

### Enrollment by State Fall 2017-2021

<b>State</b>	<b>2017</b>	<b>2018</b>	<b>2019</b>	<b>2020</b>	<b>2021</b>
Alabama	1	2	3		1
Alaska		1			
Arizona				1	1
Arkansas					1
Army Europe		1	1		
Army Pacific		1		1	1
California	2	5	1		1
Colorado					2
Connecticut		2	4	4	5
Delaware	1	5	5	5	4
Dist. of Columbia	8	10	11	15	16
Florida	5	13	15	8	7
Foreign Country	1	1	9	11	10
Georgia	4	4	10	11	22
Illinois		2	1	2	2
Indiana				1	1
Kansas					1
Kentucky		2	2	1	
Louisiana			1	4	5
Maine					1
Maryland	16	27	35	56	59
Massachusetts					1
Michigan		1	3	4	3
Minnesota					1
Mississippi	2				1
Nevada	2	2	2	1	
New Jersey	6	11	10	13	22
New York	5	8	9	7	8
North Carolina	1308	1442	1504	1691	1687
Ohio		2	2	2	8
Oklahoma					1

<b>State</b>	<b>2017</b>	<b>2018</b>	<b>2019</b>	<b>2020</b>	<b>2021</b>
Pennsylvania	1	3	5	6	13
South Carolina	3	6	6	10	20
Tennessee	1				2
Texas	2	2	1	3	7
Unknown	3	2			
Virginia	39	122	131	144	138
Washington	1	1	1	1	1
Wisconsin					1
<b>Grand Total</b>	<b>1411</b>	<b>1678</b>	<b>1772</b>	<b>2002</b>	<b>2054</b>

### Enrollment by Counties for North Carolina

County	2017	2018	2019	2020	2021
Alamance	3	6	11	11	14
Alexander					1
Anson				3	3
Ashe		1			
Beaufort	18	18	19	18	20
Bertie	43	52	43	39	29
Bladen	3	2	3	2	3
Brunswick	1	5	2		1
Buncombe	2	3	2	4	2
Burke	1	1	3	1	2
Cabarrus	6	3	9	16	19
Caldwell	1		2	1	3
Camden	48	51	50	55	55
Carteret	4	3	3	5	6
Caswell	1		1		
Catawba		3	1	2	2
Chatham	2	3	2	1	2
Cherokee			1	1	
Chowan	53	45	48	51	51
Clay				1	1
Cleveland			3	3	2
Columbus	2	2	3	3	3
Craven	11	9	13	16	19
Cumberland	16	19	19	31	40
Currituck	35	36	61	74	64
Dare	7	10	16	16	14
Davidson	6	3	5	4	6
Davie		2	1		
Duplin	3	7	4	3	6
Durham	20	20	22	31	31
Edgecombe	23	28	36	38	31
Forsyth	16	12	16	20	21
Franklin	8	10	12	21	17
Gaston	2	5	7	7	7
Gates	26	23	23	32	34
Granville	4	5	4	2	3
Greene	2	3	1	4	2
Guilford	28	31	35	43	46
Halifax	60	67	75	58	67
Harnett	6	6	7	8	5
Haywood					1
Henderson				3	1
Hertford	69	72	56	51	49



County	2017	2018	2019	2020	2021
Hoke	4	7	6	2	1
Hyde	2	4	4	5	6
Iredell	3	5	4	5	8
Jackson		1	1	2	
Johnston	6	8	10	18	16
Jones	1	4	3	3	3
Lee	6	2	3	3	
Lenoir	3	6	10	10	9
Lincoln		2	1	2	4
Macon	1	1	1	2	1
Madison					1
Martin	12	7	5	2	3
Mcdowell	8	12	19	17	13
Mecklenburg	47	47	51	70	89
Montgomery		1	1	3	2
Moore	1			2	4
Nash	17	15	19	21	25
New Hanover	5	3	2	5	7
None	13	16	9	9	9
Northampton	24	30	26	27	20
Onslow	18	23	23	35	26
Orange	2	1	2	3	5
Pamlico	2	4	6	5	7
Pasquotank	301	350	364	376	363
Pender	2	3	2	3	3
Perquimans	61	63	45	53	49
Person			1	4	4
Pitt	25	27	50	57	69
Randolph		1	1	2	3
Richmond	2	1	2	2	2
Robeson	2	5	6	6	4
Rockingham	3	3	2	3	4
Rowan	2	2	2	2	1
Rutherford		1			2
Sampson	1	1	1	3	2
Scotland	4	2	3	5	2
Stanly	2	2	4	3	4
Stokes				2	2
Surry	1	1	1	4	3
Tyrrell	11	11	12	12	8
Union	13	10	9	14	10
Vance	3	7	12	17	19
Wake	58	78	84	106	105
Warren	8	5	7	3	4
Washington	32	38	27	29	32
Wayne	13	15	19	27	27

<b>County</b>	<b>2017</b>	<b>2018</b>	<b>2019</b>	<b>2020</b>	<b>2021</b>
Wilkes	1	1	1	1	1
Wilson	19	14	12	16	14
<b>Grand Total</b>	<b>1269</b>	<b>1406</b>	<b>1492</b>	<b>1680</b>	<b>1679</b>

**Enrollment from 21 \*NENC Counties  
(New Freshmen)**

Northeastern North Carolina Counties	2017	2018	2019	2020	2021
BEAUFORT	9	5		5	5
BERTIE	13	13	6	4	2
CAMDEN	10	5	10	8	5
CHOWAN	15	9	10	9	3
CURRITUCK	8	10	10	12	5
DARE		1	3	2	0
EDGECOMBE	6	9	12	3	3
FRANKLIN	3	3	5	5	3
GATES	10	7	2	10	6
HALIFAX	13	16	11	4	6
HERTFORD	15	11	6	6	7
HYDE	2	3	1		2
MARTIN		2	8		0
NASH	5	7	6	6	5
NORTHAMPTON	7	8	3	2	0
PASQUOTANK	52	70	56	31	47
PERQUIMANS	13	5	6	5	4
TYRRELL	1	1			0
VANCE	3	3	4	6	7
WARREN		1	2	1	2
WASHINGTON	4	11	7	8	5
<b># of NENC students</b>	189	200	168	127	117
<b>Total New Freshman Enrollment</b>	349	418	385	364	324
<b>% of NENC Students</b>	54.2	47.9	43.6	34.9	36.1
<b>Total In-State New Freshman</b>	319	299	307	274	230
<b>% of In-State Students from NENC</b>	59.2	66.9	54.7	46.4	50.9

**Enrollment from 21 \*NENC Counties  
(New Transfers)**

<b>Northeastern North Carolina Counties</b>	<b>2017</b>	<b>2018</b>	<b>2019</b>	<b>2020</b>	<b>2021</b>
BEAUFORT		1	4	1	0
BERTIE	5	8	2	1	1
CAMDEN	7	7	10	6	7
CHOWAN	1	5	3	7	5
CURRITUCK	5	5	12	9	9
DARE	1	5	3	3	4
EDGECOMBE	2	3	2	2	0
FRANKLIN	1			6	1
GATES	1	2		5	2
HALIFAX	12	8	11	6	6
HERTFORD	9	5	6	4	4
MARTIN	3	2	1	1	2
NASH	2		2	2	1
NORTHAMPTON	3	3	2	6	1
PASQUOTANK	26	31	30	34	26
PERQUIMANS	3	2	7	7	7
TYRRELL		1	3	1	1
VANCE		2	1	1	0
WARREN			1		0
WASHINGTON	2	1	1	6	2
<b># of NENC students</b>	83	91	101	108	79
<b>Total New Transfer enrollment</b>	117	184	173	202	196
<b>% of NENC Students</b>	70.9	49.5	58.4	53.5	40.3
<b>Total In-State New Transfers</b>	97	122	134	162	162
<b>% of In-State Students from NENC</b>	85.6	74.6	75.4	66.7	82.6

**Enrollment from 21 \*NENC Counties  
(Undergraduates)**

<b>Northeastern North Carolina Counties</b>	<b>2017</b>	<b>2018</b>	<b>2019</b>	<b>2020</b>	<b>2021</b>
BEAUFORT	17	18	19	18	18
BERTIE	43	56	41	36	27
CAMDEN	48	50	53	55	58
CHOWAN	54	46	49	50	49
CURRITUCK	34	35	54	71	63
DARE	7	9	16	14	14
EDGECOMBE	23	26	32	34	27
FRANKLIN	9	11	14	21	17
GATES	27	23	22	31	34
HALIFAX	59	67	71	57	64
HERTFORD	68	70	54	49	49
HYDE	2	4	4	4	6
MARTIN	16	17	20	15	15
NASH	17	16	20	24	28
NORTHAMPTON	25	32	29	31	24
PASQUOTANK	301	349	358	369	351
PERQUIMANS	58	58	43	48	40
TYRRELL	10	11	10	12	8
VANCE	3	8	13	17	20
WARREN	9	6	8	2	4
WASHINGTON	31	38	27	34	38
<b># of NENC students</b>	861	950	957	992	954
<b>Total Undergrad enrollment</b>	1,368	1,638	1,697	1,912	1,956
<b>% of NENC Students</b>	62.9	58.0	56.4	51.9	48.8
<b>Total In-State Undergrad</b>	1,196	1,281	1,330	1,549	1,592
<b>% of In-State Students from NENC</b>	72.0	74.2	72.0	64.0	59.9

## Summer School Profile of Enrolled Students (Undergraduates)

<b>Enrollment Characteristics</b>	<b>2017</b>	<b>2018</b>	<b>2019</b>	<b>2020</b>	<b>2021</b>
	<b>Session</b>	<b>Session</b>	<b>Session</b>	<b>Session</b>	<b>Session</b>
Headcount	290	284	404	507	807
FTE	138.50	128.50	208.5	263.8	409.8
Full-time	12	9	45	55	72
Part-time	278	275	359	452	735
Full-time %	4.14%	3.17%	11.14%	10.85%	8.92%
Part-time %	95.86%	96.83%	88.86%	89.15%	91.08%
Female	167	180	261	329	501
Male	123	104	143	178	306
Female %	57.59%	63.38%	64.60%	64.89%	62.08%
Male %	42.41%	36.62%	35.40%	35.11%	37.92%
In-State	275	259	380	470	657
Out-of-State	15	25	24	37	150
In-State %	94.83%	91.20%	94.06%	92.70%	81.41%
Out-of-State %	5.17%	8.80%	5.94%	7.30%	18.59%
American Indian or Alaskan Native	3	1	2	3	7
Asian	2	1	4	3	2
Black or African American	209	200	267	357	582
Hispanics	6	10	18	19	39
Native Hawaiian or Other Pacific Islander	2	2	0	1	0
Non-Resident Alien	0	0	1	3	3
Race and Ethnicity Unknown	15	11	9	9	14
Two or more races	3	7	14	28	41
White	50	52	89	84	119
American Indian or Alaskan Native %	1.03%	0.35%	0.50%	0.59%	0.87%
Asian %	0.69%	0.35%	0.99%	0.59%	0.25%
Black or African American %	72.07%	70.42%	66.09%	70.41%	72.12%
Hispanics %	2.07%	3.52%	4.46%	3.75%	4.83%
Native Hawaiian or Other Pacific Islander %	0.69%	0.70%	0.0%	0.20%	0.00%
Non-Resident Alien %	0.0%	0.0%	0.25%	0.59%	0.37%
Race and Ethnicity Unknown %	5.17%	3.87%	2.23%	1.78%	1.73%
Two or more races %	1.03%	2.46%	3.47%	5.52%	5.08%
White %	17.24%	18.31%	22.03%	16.57%	14.75%
Avg. SAT Read	416	421	418	508	474
Avg. SAT Math	435	427	420	502	450
Avg. SAT Writ					390
Avg. SAT Total					1,314
Avg. ECSU GPA	2.80	2.74	2.85	2.93	2.80
Avg. Age	24.6	25.2	25.1	25.1	25.2

## Summer School Profile of Enrolled Students (Graduates)

<b>Enrollment Characteristics</b>	<b>2017</b>	<b>2018</b>	<b>2019</b>	<b>2020</b>	<b>2021</b>
	<b>Session</b>	<b>Session</b>	<b>Session</b>	<b>Session</b>	<b>Session</b>
Headcount	20	14	35	51	48
FTE	13.25	10.25	27.75	40.75	39.00
Full-time	0	1	11	20	22
Part-time	20	13	24	31	26
Full-time %	0.0%	7.14%	31.43%	39.22%	45.83%
Part-time %	100%	92.86%	68.57%	60.78%	54.17%
Female	17	12	25	42	37
Male	3	2	10	9	11
Female %	85.00%	85.71%	71.43%	82.35%	77.08%
Male %	15.00%	14.29%	28.57%	17.65%	22.92%
In-State	20	14	33	47	42
Out-of-State	0	0	2	4	6
In-State %	100%	100%	94.29%	92.16%	87.50%
Out-of-State %	0%	0%	5.71%	7.84%	12.50%
American Indian or Alaskan Native	0	0	0	0	0
Asian	0	0	0	1	0
Black or African American	7	8	18	20	24
Hispanics	0	0	0	2	1
Native Hawaiian or Other Pacific Islander	0	0	0	0	0
Non-Resident Alien	0	0	1	0	0
Race and Ethnicity Unknown	7	1	9	15	14
Two or more races	0	0	0	0	1
White	6	5	7	13	8
American Indian or Alaskan Native	0%	0%	0%	0%	0%
Asian %	0%	0%	0%	1.96%	0%
Black or African American %	35.00%	57.14%	51.43%	39.22%	50.00%
Hispanics %	0%	0%	0%	3.92%	2.08%
Native Hawaiian or Other Pacific Islander %	0%	0%	0%	0%	0%
Non-Resident Alien %	0%	0%	2.86%	0%	0%
Race and Ethnicity Unknown %	35.00%	7.14%	25.71%	29.41%	29.17%
Two or more races %	0%	0%	0%	0%	2.08%
White %	30.00%	35.71%	20.00%	25.49%	16.67%
Avg. ECSU GPA	3.85	3.86	3.66	3.76	3.12
Avg. Age	37.6	34.6	34.4	32.7	33.3

### Headcount by Total Student Credit Hours (Undergraduates)

Credit Hrs	2017		2018		2019		2020		2021	
	# of Students	# of Hours	# of Students	# of Hours	# of Students	# of Hours	# of Students	# of Hours	# of Students	# of Hours
1	1	1			1	1	8	8	1	1
2	6	12	5	10	2	4	4	8	3	6
3	58	174	65	195	55	165	103	309	121	363
4	4	16	6	24	4	16	18	72	19	76
5	17	85	10	50	3	15	10	50	8	40
6	63	378	61	366	68	408	82	492	107	642
7	15	105	15	105	20	140	19	133	16	112
8	4	32	8	64	2	16	13	104	23	184
9	26	234	40	360	37	333	50	450	60	540
10	16	160	14	140	14	140	16	160	23	230
11	7	77	8	88	7	77	14	154	13	143
12	172	2,064	194	2,328	182	2,184	263	3,156	316	3,792
13	65	845	75	975	91	1,183	108	1,404	142	1,846
14	55	770	86	1,204	110	1,540	117	1,638	134	1,876
15	397	5,955	539	8,085	605	9,075	627	9,405	565	8,475
16	222	3,552	257	4,112	298	4,768	254	4,064	256	4,096
17	111	1,887	94	1,598	78	1,326	79	1,343	87	1,479
18	140	2,520	156	2,808	149	2,682	173	3,114	118	2,124
19	6	114	12	228	4	76	1	19	4	76
20	3	60	3	60					4	80
21	6	126	8	168	5	105	3	63	2	42
22	2	44								
23			1	23						
24										
Grand Total	1,396	19,211	1,657	22,991	1,735	24,254	1,962	26,146	2,022	26,223



**Headcount by Total Student Credit Hours  
(Graduate Students)**

Credit Hrs	2017		2018		2019		2020		2021	
	# of Students	# of Hours	# of Students	# of Hours	# of Students	# of Hours	# of Students	# of Hours	# of Students	# of Hours
1			1	1						
2									2	6
3					1	3	3	9		
4										
5							1	5		
6	4	24	5	30	14	84	19	114	7	42
7	7	49	7	49	10	70	3	21	1	7
9	4	36	7	63	5	45	6	54	15	135
10			1	10			3	30		
12							5	60		
13										
15					7	84			7	84
Grand Total	15	109	21	156	37	286	40	293	32	274

### Student Credit Hours by Category & Residence Status

<b>Residence</b>	<b>Category</b>	<b>2017</b>	<b>2018</b>	<b>2019</b>	<b>2020</b>	<b>2021</b>
In-State	Extension Crd Hrs Enrolled	2,235	2,864	3,978	8,857	7,374
	Regular Crdt Hrs Enrolled	15,476	16,145	16,073	12,465	12,845
	Total Credit Hrs	17,711	19,009	20,051	21,322	20,219
Out-of-State	Extension Crd Hrs Enrolled	139	415	531	2,241	1,586
	Regular Crdt Hrs Enrolled	1,470	3,720	3,958	2,876	4,692
	Total Credit Hrs	1,609	4,135	4,489	5,117	6,278
Grand Total	Extension Crd Hrs Enrolled	2,374	3,279	4,509	11,098	8,960
	Regular Crdt Hrs Enrolled	16,946	19,865	20,031	15,341	17,537
	Total Credit Hrs	19,320	23,144	24,540	26,439	26,497

## Degrees Conferred by Departments

Department	Level	Major	2016-17		2017-18		2018-19		2019-20		2020-21	
			Fall 2016	Spring 2017	Fall 2017	Spring 2018	Fall 2018	Spring 2019	Fall 2019	Spring 2020	Fall 2020	Spring 2021
Aviation Science and Emergency Management	Undergraduate	Aviation Science	2	5		3	2	7	9	9	3	12
		Emergency Management							1			3
Business Accounting and Sport Management	Undergraduate	Accounting	5	5		5	4	3	2	4		5
		Business Administration	17	18	12	14	13	14	9	10	11	22
		Sport Management	2	3	7	5	2	5	6	6	8	7
Education	Graduate	Elementary Education (M)	1				2	1		5		8
		School Administration	5	3		8	2	7		5	2	
	Undergraduate	Birth through Kindergarten	4	7	3	7	3	5	4	5	5	5
		Elementary Education	3	8	3	4		6		2	3	3
		Middle Grades Education		1	1	1						
		Special Education, General	2	3					1		1	1
English and Digital Media	Undergraduate	Communication Studies	4	7	1	2	3	5	2	2	2	3
		English	4	5	3	5	2	2	2	3		6
Health and Human Studies	Undergraduate	Kinesiology				2	2	3	3	4	7	7
		Pharmaceutical Science	5	6	4	4	4	1		6	1	
		Physical Education and Health	9	7	5	6		1				
		Psychology	2	2	4	5	5	5	5	7	7	12
		Social Work		12		9	5	14	5	7	3	22
Homeland Security	Undergraduate	Homeland Security										1
Mathematics, Computer Science and Engineering Technology	Graduate	Mathematics (G)		4	1			3	1	7	1	7
	Undergraduate	Computer Information Science	2	8	5	9	5	7	1	8		9
		Engineering Technology	2	2		5	5	6	2	5	2	6
		Industrial Technology	2	1			1					
		Mathematics	2	4	3	3	1	3		5	4	1
Music and Visual Arts	Undergraduate	Graphic Design	2	3	1	6	1	8	2	2	4	4
		Music	3	6	6	3	1	7	1	3	4	3

Department	Level	Major	2016-17		2017-18		2018-19		2019-20		2020-21	
			Fall 2016	Spring 2017	Fall 2017	Spring 2018	Fall 2018	Spring 2019	Fall 2019	Spring 2020	Fall 2020	Spring 2021
Natural Sciences	Graduate	Biology (G)	3	1	1	7	1	2		5		2
	Undergraduate	Biology	9	6	9	7	8	2	4	13	11	12
		Chemistry	3			1	1	2	1	1	1	3
Social Sciences	Undergraduate	Criminal Justice	11	20	16	18	8	15	10	10	15	19
		History		5	3	8	1	2	2	4	2	2
		Interdisciplinary Studies			4	9	8	11	9	15	25	13
		Political Science		1	1		1					
		Sociology	10	8	3	10	2	4	4	2	1	
<b>Grand Total</b>			<b>114</b>	<b>161</b>	<b>96</b>	<b>166</b>	<b>93</b>	<b>151</b>	<b>86</b>	<b>155</b>	<b>123</b>	<b>198</b>

### Characteristics of Degrees Conferred

Enrollment Characteristics	2016-17		2017-18		2018-19		2019-20		2020-21	
	#	%	#	%	#	%	#	%	#	%
Headcount	275	100	262	100	244	100	242	100	321	100
Men	96	34.9	105	40.1	103	42.2	96	39.7	126	39.2
Women	179	65.1	157	59.9	141	57.8	146	60.3	195	60.8
In-State	258	93.8	243	92.8	227	93.0	217	89.7	278	86.6
Out-of-State	17	6.2	19	7.3	17	7.0	25	10.3	43	13.4
Non-Resident										
Alien	0	0	1	0.4	0	0	1	0.41	5	1.6
Unknown	23	8.4	23	8.8	12	4.9	12	5.0	7	2.2
Hispanic	5	1.8	5	1.9	5	2.1	9	3.7	14	4.4
American Indian	0	0	1	0.4	4	1.6	1	0.4	1	0.31
Asian	0	0			2	0.8	2	0.8	2	0.62
Black	195	70.9	180	68.7	167	68.4	162	66.9	211	65.7
White	50	18.2	50	19.1	51	20.9	52	21.5	73	22.7
Two or More races	2	0.7	2	0.8	3	1.2	3	1.2	8	2.5
Average GPA	3.12		3.03		3.12		3.18		3.27	

## Retention Rates

*Rates in the following chart reflect the cohort of first-time full-time freshmen (2011 - 2020)*

Year of Entry	Number of Freshmen	Number of Year(s) After Entry					
		1	2	3	4	5	6
<b>Retention Rates</b>							
2011	387	79.1	55.6	49.1	19.9	5.7	3.8
2012	523	72.5	56.0	49.1	25.6	8.9	3.4
2013	322	68.3	53.4	48.9	27.8	8.4	2.2
2014	204	73.5	57.4	49.8	29.2	6.2	2.4
2015	268	67.8	49.6	48.1	25.8	11.2	3.8
2016	203	73.9	58.1	46.1	22.3	5.9	.
2017	349	72.5	61.9	51.0	23.2	.	.
2018	418	70.6	57.2	49.0	.	.	.
2019	385	75.6	58.5	.	.	.	.
2020	364	73.4					

## Graduation Rates

*Rates in the following chart reflect the cohort of first-time full-time freshmen (2011- 2020)*

Year of Entry	Number of Freshmen	Number of Year(s) After Entry					
		1	2	3	4	5	6
<b>Graduation Rates</b>							
2011	387	0	0	0.5	22.7	33.2	37.5
2012	523	0	0	1.1	21.1	34.9	42.4
2013	322	0	0	0.9	18.3	33.9	38.4
2014	204	0	0	3.8	21.5	38.7	44.9
2015	268	0	0	0.4	19.4	33.6	40.0
2016	203	0	0	0.5	24.3	39.1	.
2017	349	0	0	1.7	29.9	.	.
2018	418	0	0	2.4	.	.	.
2019	385	0	0.5	.	.	.	.
2020	364	0					

### Full-Time Faculty & Staff by Occupational Activity

Categories	2018	2019	2020	2021
Building and grounds cleaning and maintenance	31	30	31	28
Business and Financial Operations	26	28	28	28
Community and Social Service	2	2	2	1
Computer and Mathematical	15	15	15	15
Construction and extraction	9	5	6	5
Entertainers, Performer, Sports Worker				12
First-Line Mgr Food Prep, Serv	1			
Healthcare practitioners and technical	3	2	2	1
Installation, maintenance and repair	7	4	4	4
Instructional Coordinators	9	10	10	10
Legal	2	2	2	2
Librarians	3	4	5	4
Life, Physical and Social Science	10	15	15	15
Management	53	54	54	57
Miscellaneous Education, Training and Library Workers	15	15	16	15
Office and administrative support	42	42	41	40
Personal care service	3	3	3	4
Postsecondary Teacher	115	123	118	128
Pre-school, primary, secondary and special education teacher	2	3	3	3
Protective service	15	15	16	15
Sales and related	2	2	2	2
Transportation and material moving	1	2	2	2
<b>Grand Total</b>	<b>379</b>	<b>388</b>	<b>386</b>	<b>391</b>

Source: Elizabeth City State University Office of Human Resources (HR DataMart)

### Full-Time Instructional Faculty by Gender

	2017	2018	2019	2020	2021
Men	65	70	71	69	73
Women	31	45	52	49	55
Total	96	115	123	118	128

### Full-Time Instructional Faculty by Highest Earned Degree

	2017	2018	2019	2020	2021
Doctorate	79	88	84	83	82
Specialist/JD	0	0	1	0	0
Master's	17	25	33	30	32
Bachelor's	0	2	4	3	5
Other	0	0	1	2	9
Total	96	115	123	118	128

### Full-Time Instructional Faculty by Academic Rank

	2017	2018	2019	2020	2021
Professor	31	29	26	27	25
Associate Professor	32	30	27	28	28
Assistant Professor	21	25	22	23	24
Instructor	0	1	3	27	36
Lecturer	12	13	14	13	15
Total	96	115	123	118	128

### Full-Time Instructional Faculty by Tenure Status

	2017	2018	2019	2020	2021
Tenure	58	53	49	46	44
On Track	25	27	23	24	25
Not On Track	13	35	51	48	59
Total	96	115	123	118	128

### Full-Time Instructional Faculty by Ethnicity

	2017	2018	2019	2020	2021
Black	47	20	55	55	62
White	18	15	37	32	35
American Indian	2	1	2	2	2
Asian	21	5	17	18	15
Hispanic	3	2	4	4	4
Non-Resident	4	3	5	5	5
Unknown	1	6	3	2	5
Total	96	115	123	118	128



**Financial Summary (Revenue)**  
*(\$ in thousands -- 000s omitted)*

<b>Source of Income (Total)</b>	<b>2017</b>	<b>2018</b>	<b>2019</b>	<b>2020</b>	<b>2021</b>
Tuition and Fees	4,343	4,014	3,468	4,567	4,772
Government Appropriations	33,375	33,007	37,895	35,553	35,390
Government Grants and Contracts	13,081	15,409	14,809	14,554	15,360
Private Gifts, Grants and Contracts	631	798	907	1,147	27,140
Investment Income	1,075	926	872	466	5,317
Other Core Revenues	1,764	3,260	3,775	12,420	19,029
<b>Total Core Revenues</b>	<b>54,518</b>	<b>57,418</b>	<b>61,729</b>	<b>68,709</b>	<b>107,010</b>
<b>TOTAL</b>	<b>\$58,518</b>	<b>\$60,722</b>	<b>\$65,881</b>	<b>\$74,335</b>	<b>\$111,608</b>
<b>Source of Income (% of Total)</b>	<b>2017</b>	<b>2018</b>	<b>2019</b>	<b>2020</b>	<b>2021</b>
Tuition and Fees	8.00%	7.00%	6.00%	7.00%	4.00%
Government Appropriations	61.00%	57.00%	61.00%	52.00%	33.00%
Government Grants and Contracts	24.00%	27.00%	24.00%	21.00%	14.00%
Private Gifts, Grants and Contracts	1.00%	1.00%	1.00%	2.00%	25.00%
Investment Income	2.00%	2.00%	1.00%	1.00%	5.00%
Other Core Revenues	3.00%	6.00%	6.00%	18.00%	18.00%
<b>Total Core Revenues</b>	<b>100.00%</b>	<b>100.00%</b>	<b>100.00%</b>	<b>100.00%</b>	<b>100.00%</b>

Source: IPEDS Finance

### Financial Summary (Expenditures)

(\$ in thousands -- 000s omitted)

*Continued*

<b>Expenditures (Total)</b>	<b>2017</b>	<b>2018</b>	<b>2019</b>	<b>2020</b>	<b>2021</b>
Instruction	15,979	16,955	18,487	15,551	15,939
Research	690	1,112	1,081	811	910
Public Service	1,211	1,105	1,222	974	1,414
Academic Support	3,495	2,930	3,479	4,525	5,593
Institutional Support	11,687	11,899	9,588	13,426	15,348
Student Services	8,247	10,054	9,497	7,786	7,732
Other Core Expenses	2,940	4,587	4,571	8,262	10,153
Total Core Expenses	44,252	48,645	47,928	51,338	57,092
<b>TOTAL</b>	<b>\$57,996</b>	<b>\$62,244</b>	<b>\$65,654</b>	<b>\$66,619</b>	<b>70,618</b>
<b>Expenditures (% of Total)</b>	<b>2017</b>	<b>2018</b>	<b>2019</b>	<b>2020</b>	<b>2021</b>
Instruction	36.00%	35.00%	39.00%	30.00%	28.00%
Research	2.00%	2.00%	2.00%	2.00%	2.00%
Public Service	3.00%	2.00%	3.00%	2.00%	2.00%
Academic Support	8.00%	6.00%	7.00%	9.00%	10.00%
Institutional Support	26.00%	24.00%	20.00%	26.00%	27.00%
Student Services	19.00%	21.00%	20.00%	15.00%	14.00%
Other Core Expenses	7.00%	9.00%	10.00%	16.00%	18.00%
Total Core Expenses	100.00%	100.00%	100.00%	100.00%	100.00%

Source: IPEDS Finance

## Facilities

	Total		Type of Usage											
			Classrooms		Laboratories		Library Space		Office Space		Residential		Other	
	NSF	%	NSF	%	NSF	%	NSF	%	NSF	%	NSF	%	NSF	%
001 --- MOORE HALL	24172	100	4258	17.62	3993	16.52	522	2.16	6541	27.06	-	-	8858	36.65
002 --- LESTER HALL	11579	100	2676	23.11	639	5.52	-	-	4546	39.26	-	-	3718	32.11
003 --- WILLIAMS HALL	23025	100	4361	18.94	781	3.39	-	-	4368	18.97	-	-	13515	58.7
005 --- JOHNSON HALL	18719	100	7571	40.45	4637	24.77	-	-	4228	22.59	-	-	2283	12.2
006 --- GR LITTLE LIBRARY	39178	100	-	-	-	-	27803	70.97	1283	3.27	-	-	10092	25.76
011 --- SYMERA HALL	11134	100	-	-	-	-	-	-	-	-	-	-	11134	100
012 --- CARDWELL-HOFFLER INF	4967	100	-	-	-	-	-	-	105	2.11	-	-	4862	97.89
013 --- TRIGG HALL	4968	100	-	-	-	-	147	2.96	3155	63.51	-	-	1666	33.53
014 --- HUGH CALE HALL	9910	100	-	-	-	-	528	5.33	231	2.33	6853	69.15	2298	23.19
015 --- BIAS HALL	19426	100	-	-	-	-	384	1.98	-	-	16763	86.29	2279	11.73
016 --- BUTLER HALL	16588	100	-	-	-	-	369	2.22	94	0.57	11936	71.96	4189	25.25
017 --- DOLES HALL	13191	100	-	-	-	-	881	6.68	148	1.12	9340	70.81	2822	21.39
020 --- LANE HALL	7259	100	3102	42.73	1812	24.96	-	-	1977	27.24	-	-	368	5.07
021 --- TV/TELECOMMUNICATIO N	1741	100	-	-	-	-	-	-	676	38.83	-	-	1065	61.17
023 --- SEARS BUILDING	2676	100	-	-	-	-	-	-	988	36.92	-	-	1688	63.08
025 --- RIDLEY HALL	8031	100	-	-	-	-	-	-	-	-	-	-	8031	100
026 --- BEDELL HALL	18651	100	-	-	-	-	-	-	136	0.73	-	-	18515	99.27
100 --- PRINCIPALS HOUSE	2862	100	-	-	-	-	-	-	2862	100	-	-	-	-
102 --- 2034 WEEKSVILLE	1124	100	-	-	-	-	-	-	-	-	-	-	1124	100
103 --- 2036 WEEKSVILLE	851	100	-	-	-	-	-	-	-	-	-	-	851	100
104 --- 2038 WEEKSVILLE	1124	100	-	-	-	-	-	-	-	-	-	-	1124	100
105 --- 2040 WEEKSVILLE	851	100	-	-	-	-	-	-	-	-	-	-	851	100
108 --- HERRINGTON RD RESID	1797	100	-	-	-	-	-	-	-	-	-	-	1797	100
110 --- PURCHASING	1085	100	-	-	-	-	-	-	-	-	-	-	1085	100
117 --- WAMACK HALL	18098	100	-	-	-	-	817	4.51	96	0.53	13730	75.86	3455	19.09
118 --- MITCHELL-LEWIS HALL	25280	100	-	-	-	-	870	3.44	50	0.2	19073	75.45	5287	20.91
119 --- VAUGHAN CNTR - POOL	13938	100	966	6.93	-	-	-	-	2715	19.48	-	-	10257	73.59
119A --- VAUGHAN CNTR - GYM	63694	100	2872	4.51	-	-	-	-	2331	3.66	-	-	58491	91.83
121 --- DIXON HALL	26146	100	1909	7.3	16967	64.89	-	-	922	3.53	-	-	6348	24.28
122 --- THOMAS-JENKINS HALL	8563	100	-	-	-	-	-	-	1734	20.25	-	-	6829	79.75

	Total		Type of Usage												
	NSF	%	Classrooms		Laboratories		Library Space		Office Space		Residential		Other		
			NSF	%	NSF	%	NSF	%	NSF	%	NSF	%	NSF	%	
122A --- STORAGE-WAREHOUSE	5701	100	-	-	-	-	-	-	-	-	-	-	-	5701	100
123 --- HAZ CHEM (JENKINS)	76	100	-	-	-	-	-	-	-	-	-	-	-	76	100
124 --- HAZ GASES POOL	76	100	-	-	-	-	-	-	-	-	-	-	-	76	100
125 --- MCLENDON HALL	8148	100	738	9.06	-	-	-	-	2919	35.82	-	-	-	4491	55.12
126 --- GRIFFIN HALL	12632	100	418	3.31	-	-	-	-	4684	37.08	-	-	-	7530	59.61
127 --- SLOAN HALL	6328	100	-	-	-	-	-	-	-	-	6328	100	-	-	-
128 --- MIDGETT HALL	6328	100	-	-	-	-	-	-	-	-	6328	100	-	-	-
129 --- COMPLEX UNIT C	6328	100	-	-	-	-	-	-	-	-	6328	100	-	-	-
130 --- COMPLEX UNIT D	6328	100	-	-	-	-	-	-	-	-	6328	100	-	-	-
131 --- COMPLEX UNIT E	6328	100	-	-	-	-	-	-	-	-	6328	100	-	-	-
132 --- COMPLEX UNIT F	6328	100	-	-	-	-	-	-	-	-	6328	100	-	-	-
133 --- COMPLEX UNIT G	3133	100	-	-	-	-	182	5.81	88	2.81	686	21.9	2177	69.49	-
134 --- CHANCELLOR'S RES	3707	100	-	-	-	-	-	-	-	-	-	-	3707	100	-
135 --- K.E. WHITE GRAD CTR	21550	100	-	-	-	-	-	-	1368	6.35	242	1.12	19940	92.53	-
136 --- E.V. WILKINS	2923	100	-	-	1340	45.84	-	-	654	22.37	-	-	929	31.78	-
139 --- M.D.THORPE ADMIN.	22115	100	-	-	-	-	286	1.29	14143	63.95	-	-	7686	34.75	-
142 --- CHANCELLOR RES. STGE	260	100	-	-	-	-	-	-	-	-	-	-	260	100	-
145 --- JENKINS SCIENCE BLDG	34023	100	7606	22.36	14849	43.64	445	1.31	4936	14.51	-	-	6187	18.18	-
146 --- COMMUTER CENTER	8959	100	-	-	-	-	-	-	628	7.01	-	-	8331	92.99	-
147 --- UNIVERSITY TOWER	24925	100	-	-	-	-	876	3.51	120	0.48	20006	80.26	3923	15.74	-
148 --- FINE ARTS	32133	100	1650	5.13	11997	37.34	358	1.11	3604	11.22	-	-	14524	45.2	-
149 --- ITC BUILDING	14462	100	2354	16.28	1664	11.51	710	4.91	3553	24.57	-	-	6181	42.74	-
151 --- FIELD HOUSE/PE CTR	7286	100	1357	18.62	-	-	-	-	950	13.04	-	-	4979	68.34	-
153 --- UNIVERSITY SUITES	39192	100	-	-	-	-	1953	4.98	-	-	34680	88.49	2559	6.53	-
154 --- VIKING VILLAGE	109732	100	-	-	-	-	-	-	120	0.11	77381	70.52	32231	29.37	-
155 --- STUDENT CENTER	18382	100	-	-	-	-	1463	7.96	2372	12.9	-	-	14547	79.14	-
156 --- PHARMACY COMPLEX	30115	100	10552	35.04	7991	26.53	556	1.85	4196	13.93	-	-	6820	22.65	-
157 --- GILCHRIST COMPLEX	25649	100	11608	45.26	862	3.36	605	2.36	6864	26.76	-	-	5710	22.26	-
Total	863775	100	63998	7.41	67532	7.82	39755	4.6	90385	10.46	248658	28.79	353447	40.92	-