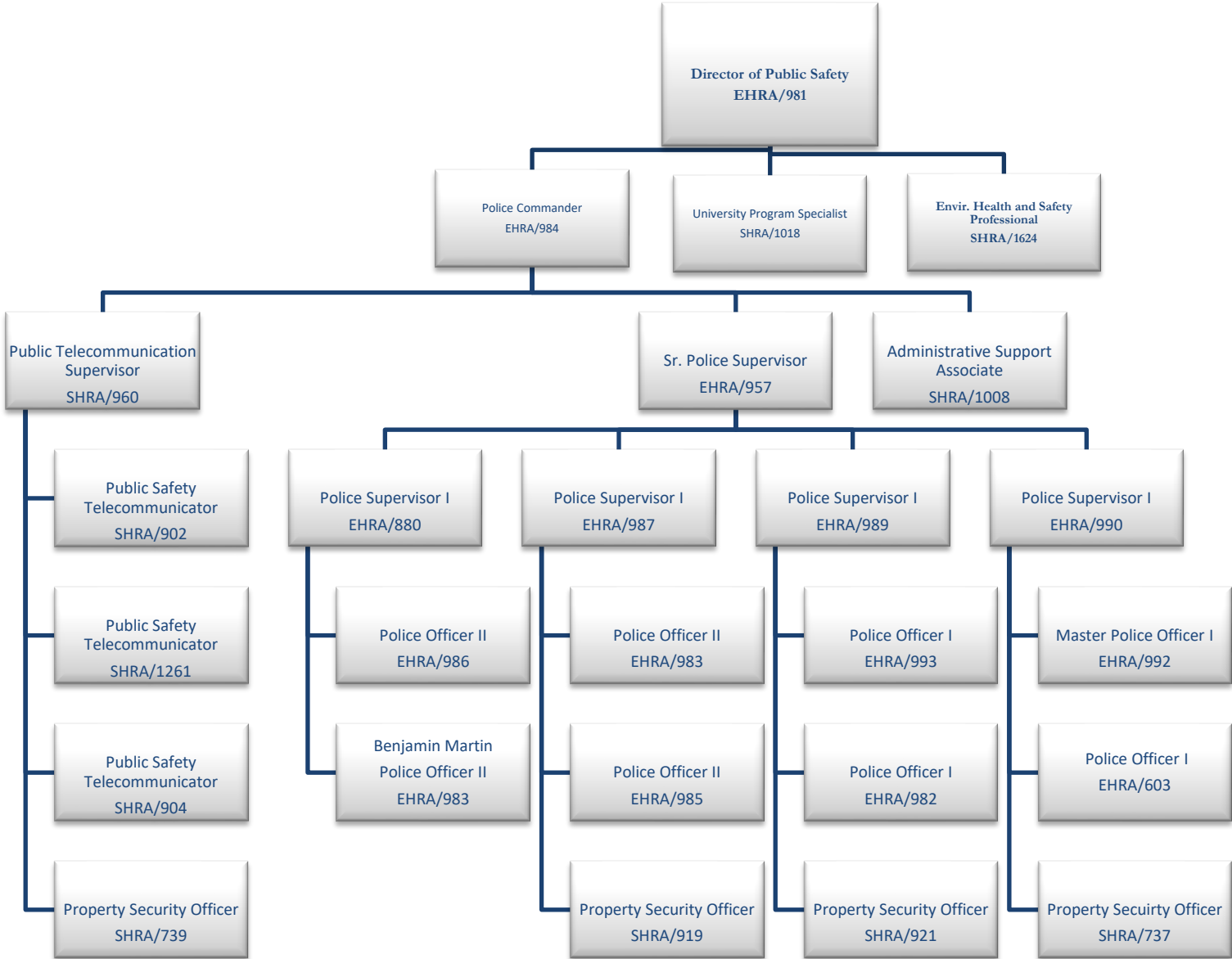


ELIZABETH CITY STATE UNIVERSITY

University Police



Office of the Chief of Police

The Director of Public Safety holds the rank of Chief of Police. The Chief of Police is responsible for developing, implementing, supervising and evaluating a proactive campus police department that provides comprehensive public safety to the students, faculty, staff and community 24 hours a day, seven days a week.

Budget

Budgeting involves assessing the department's needs, setting priorities and allocating funds accordingly. It requires careful planning, analysis and accountability to ensure that resources are utilized efficiently and effectively. The budget directly impacts the department's ability to carry out its mission and provide necessary services to the university community.

Personnel

An Administrative Support Associate is crucial in supporting the department's personnel. She handles administrative tasks related to personnel records management and payroll processing.

Clery Act Coordinator

The Clery Act Coordinator oversees the institution's collection, analysis and dissemination of crime statistics. This involves coordinating with campus security personnel, local law enforcement agencies and other relevant departments to gather accurate crime data. The coordinator is responsible for compiling and publishing an annual security report that includes crime statistics and other mandated information.

The coordinator ensures that the institution has protocols for issuing timely warnings and emergency notifications to the campus community when there is an immediate threat to the safety of students, faculty or staff.

Administrative Division

The Administrative Division Commander oversees all administrative functions of the department. Specifically, the Commander provides direct supervision of the following sections:

Criminal Investigations Division

The Criminal Investigations Division (CID) is a specialized unit within the police department that investigates criminal activities. CID officers, also known as investigators, gather evidence, conduct interviews and analyze information to solve crimes and bring offenders to justice.

CID investigators work on many cases, including homicides, robberies, burglaries, sexual assaults, fraud and other serious offenses. They collaborate closely with patrol officers, forensic experts and other law enforcement agencies to assemble evidence and build strong cases.

Overall, the Criminal Investigations Division is crucial in the police department's efforts to combat crime, gather evidence and bring offenders to justice through thorough and systematic investigative work.

Office of Professional Standards

The Office of Professional Standards conducts thorough and impartial investigations into allegations of misconduct or violations of department policies and procedures by police officers. These investigations may involve complaints filed by members of the public or incidents identified internally.

The Professional Standards Lieutenant coordinates comprehensive background investigations on potential hires. This may involve conducting interviews with references, verifying employment and education history, reviewing criminal records and assessing character and suitability for the position.

The Office of Professional Standards also plans and organizes various events. It handles logistical details, permits, scheduling and coordinating with internal and external stakeholders.

Training

The police department's Training Section is a specialized section responsible for developing, implementing and managing training programs for law enforcement officers. The Training Section is critical in ensuring that officers receive the necessary knowledge, skills and resources to effectively carry out their duties while upholding professional standards and best practices.

Records

The police department's Record Section is a departmental unit responsible for organizing, maintaining and managing various records and documents generated by the police department. The Record Section handles requests for police records from authorized individuals or organizations, such as attorneys, law enforcement agencies or members of the public.

Accreditation

The police department's accreditation section is a specialized unit responsible for managing the accreditation process and ensuring compliance with established standards and best practices. Accreditation is a voluntary process that allows police departments to demonstrate their commitment to professionalism, accountability and adherence to recognized industry standards.

Patrol Division

The Patrol Operations Division Commander is responsible for law enforcement provided to the University community. This is accomplished through:

Uniform Patrol

Uniform Patrol is the fundamental and visible component of the police department, aimed at maintaining public safety, deterring crime and responding to emergencies within the campus community.

Uniform Patrol comprises four teams (A, B, C and D) that work 12-hour rotating shifts, with two squads working each day, either day or night. Patrol officers are on duty 24 hours a day, seven days a week.

Security

Campus security officers regularly patrol the campus grounds, buildings and parking areas to monitor for any signs of suspicious activity, unauthorized access or potential safety hazards. Their presence helps to deter criminal behavior and provides a sense of security to the campus community.

K-9 Program

The K-9 Program involves using specially trained police dogs to enhance security and provide valuable support to the campus police department.

One of the key roles of police K-9s is to detect explosives. These highly trained dogs have a strong sense of smell and can effectively search areas, vehicles, and personal belongings for narcotics or explosive materials. This helps to combat drug use and distribution on campus and ensures a safer environment.

Logistics

The logistics officer is responsible for maintaining, repairing and servicing police equipment and vehicles. They establish maintenance schedules, coordinate with vendors and ensure all equipment is properly working. This includes firearms, communication devices, patrol vehicles, surveillance equipment and other specialized tools used by police officers.

Telecommunications Center

The Telecommunications Center, also known as a police dispatch, serves as a central hub for receiving and coordinating emergency calls, dispatching police units, and providing essential communication support to law enforcement personnel. The role of a police emergency communications center is critical in ensuring effective and efficient emergency response.

Surveillance

The role of the surveillance system is to enhance campus security and safety by employing various technologies and strategies to monitor and record activities on university grounds. The presence of surveillance cameras and other visible security measures can act as a deterrent to potential criminal activity.

It also helps in the early detection of incidents such as theft, vandalism, assaults or unauthorized access. Monitoring the surveillance feeds enables the police department to identify and respond promptly to these incidents, minimizing their impact and facilitating a faster resolution.