

ELIZABETH CITY STATE UNIVERSITY

FACT BOOK

2022 - 2023



Table Contents

Introduction.....	4
Historical Highlights.....	5
Founding.....	5
Early Leadership.....	5
Continued Growth.....	5
Today.....	5
Historic Location.....	8
Mission Statement.....	9
Vision Statement.....	9
Institutional Goals.....	10
Memberships.....	12
Accreditations.....	13
Board of Trustees (2022 – 2023).....	14
Organizational Structure.....	15
Important Telephone Numbers.....	15
Application, Acceptances, & Enrollees.....	16
New Freshmen High School GPA.....	17
New Freshmen High School Class Rank.....	17
Completed Applications & Acceptance from 21 NENC Counties.....	18
Profile of Enrolled New Freshmen (Fall).....	19
Profile of Enrolled New Freshmen (Spring).....	20
Profile of Enrolled New Transfers (Fall).....	21
Profile of Enrolled New Transfers (Spring).....	22
Profile of Enrolled Undergraduates (Fall).....	23
Profile of Enrolled Undergraduates (Spring).....	24
Profile of Enrolled Graduates (Fall).....	25
Profile of Enrolled Graduates (Spring).....	26
All Students by Classification (Fall and Spring).....	27
All Students by Majors.....	28
Enrollment by State Fall 2018-2022.....	30
Enrollment by Counties for North Carolina.....	32

Enrollment from 21 *NENC Counties	35
(New Freshmen)	35
Enrollment from 21 *NENC Counties	36
(New Transfers)	36
Enrollment from 21 *NENC Counties	37
(Undergraduates)	37
Summer School Profile of Enrolled Students	38
(Undergraduates)	38
Summer School Profile of Enrolled Students	39
(Graduates).....	39
Headcount by Total Student Credit Hours	40
(Undergraduates)	40
Headcount by Total Student Credit Hours	41
(Graduate Students)	41
Student Credit Hours by Category & Residence Status	42
Degrees Conferred by Departments.....	43
Characteristics of Degrees Conferred	44
Retention Rates	45
Graduation Rates	45
Full-Time Faculty & Staff by Occupational Activity.....	46
Full-Time Instructional Faculty by Highest Earned Degree	47
Full-Time Instructional Faculty by Academic Rank	47
Full-Time Instructional Faculty by Tenure Status.....	47
Full-Time Instructional Faculty by Ethnicity	48
Financial Summary (Revenue)	49
Financial Summary (Expenditures)	52
Facilities.....	52

Introduction

The Elizabeth City State University (ECSU) Fact Book is an annual publication that provides official statistical information about various aspects of the university's operations. We believe this document will serve as a valuable reference and resource tool for research and planning to our campus community and the public. Information presented in the Fact Book is representative of mandated reports submitted and approved by the University of North Carolina System Office, unless otherwise noted.

In continuing our efforts to provide timely information, staff in the Office of Institutional, Effectiveness, Research, and Planning is committed to refining this document each year. Therefore, your comments and suggestions are important to us for future improvements. Please do not hesitate to send comments and suggestions to me at (fmokanda@ecsu.edu) or complete our survey https://ecsu.iad1.qualtrics.com/jfe/form/SV_7TVkeHeuqkIo7Rk

Thank you very much,

Dr. Fred Okanda, Director
Office of Institutional Effectiveness, Research, and Assessment

Historical Highlights

Founding

On March 3, 1891, **Hugh Cale**, an African American representative in the N.C. General Assembly from Pasquotank County, sponsored House Bill 383, which established a normal (teaching) school for "teaching and training teachers of the colored race to teach in the common schools of North Carolina." The bill passed, and the origin of Elizabeth City State University was born.

Early Leadership

The first leader, **Peter W. Moore**, was called a Principal (subsequent leaders would be called President, then Chancellor). Moore served as Principal and then President until his retirement as President, Emeritus, on July 1, 1928. During his tenure, enrollment increased from 23 to 355 and the faculty from two to 15 members.

During the tenure of the second president, **John Henry Bias**, the institution was elevated from a two-year normal school to a four-year teachers college (1937). Two years later, the institution's name was officially changed to **Elizabeth City Teachers College** on March 30, 1939. The growth and elevation to teachers college changed the mission to include training elementary school principals for rural and city schools. The first Bachelor of Science degrees in elementary education were awarded in May of 1939.

Continued Growth

Between 1959 and 1963, the institution became more than a teaching college, adding 11 academic majors to the original elementary education major. In 1961, the college joined the Southern Association of Colleges and Schools accrediting group (SACS) and maintains its accreditation with that body to the present. In 1963, the N.C. General Assembly changed the institution's name from Elizabeth City State Teachers College to Elizabeth City State College and on July 1, 1969, the college became **Elizabeth City State University**. In 1971, the General Assembly redefined the University of North Carolina system with 16 public institutions, including ECSU. Together, those institutions became constituents of The University of North Carolina (July 1972).

Today

Academics. Currently ECSU offers over 30 academic programs of study. From business to music to aviation and education, ECSU prepares students to compete in the global work force. We achieve our commitment to the highest quality education by maintaining a rigorous focus on academic excellence through liberal arts programs and using innovative and flexible technology-based instruction models to enhance our signature areas: integrating technology with education, improving human health and wellness, and advancing the natural and aviation sciences. As of May 2018, undergraduate and/or graduate degrees have been conferred upon more than 20,000 students.

Rankings. Over the years, the university earned high rankings. ECSU has received national acclaim for its advancements: U.S. News & World Report ranks ECSU #3 Top Public Schools (Regional Colleges- South), #4 Best Colleges for Veterans (Regional- South), #18 Top Performers in Social Mobility (Regional Colleges-South), #23 Top HBCUs and #31 Best Regional Colleges- South (2022-23). Washington Monthly ranks ECSU #15 Best Bang for the Buck Colleges and #6 Best Bachelor's Colleges (2022). ECSU was also ranked as the #1 HBCU for economic returns according to Degree Choices. Military Times ranked ECSU 48th in the Southeast for Best Bet for Vets (2021).

On December 14, 2018, Dr. Karrie Dixon was named 12th Chief Executive Officer and 7th Chancellor of Elizabeth City State University.

Upon her arrival, Dr. Dixon quickly demonstrated her ability and interest in forging the University forward, giving special attention to increasing ECSU's enrollment. In 2018, first-year enrollment increased by 20%, total undergraduate enrollment increased by 19% and transfer enrollment increased by 57%. Since 2018 enrollment has climbed nearly 40%, in part because the North Carolina General Assembly authorized a special tuition-reducing program called NC Promise. She has worked vigorously to improve the institution academically, financially, and physically. Under her leadership, The UNC Board of Governors appropriated \$2.3M for repair & renovations for campus improvements, ECSU received a USDA loan, the university increased its fleet from 2 to 12 aircrafts for ECSU's signature aviation program. Also contributing has been the establishment of new degree programs: Digital Media, Unmanned Aircraft System and online programs-Interdisciplinary Studies, Homeland Security, and a Master of Education in Elementary Education.

Under Dr. Dixon's leadership, thus far 2021 had the highest yield in grant awards since 2012. The university received \$15 million in CARES Act funding, \$3.5 million in Title III U.S. Department of Education funding, \$925,000 from the U.S. Department of Education's FUTURE Act Funding, and more than \$5 million in sponsored grant funding from various sponsors. From 2021 to 2023, ECSU has been awarded new grants from agencies including the National Science Foundation, the National Institutes of Health, the U.S. Department of Education, the U.S. Department of Commerce and U.S. Department of Homeland Security, to name a few. In 2020, Dr. Dixon launched a five-year strategic plan, "Forging Our Future." Dr. Dixon continues to receive numerous accolades that demonstrate her leadership. She has been named the "The Ten Most Dominant HBCU Leaders of 2020" and was awarded The Old North State Award by North Carolina Governor Roy Cooper.

Updated March 2023

Source: Office of Communications and Marketing

Historic Location

Located in the historic Albemarle area near the mouth of the Pasquotank River, Elizabeth City State University offers students the opportunity to receive an excellent education while enjoying a wide variety of recreational and cultural amenities. Favored by a mild climate and proximity to the world renowned Outer Banks recreation area, ECSU has features that help make student living and learning both exciting and fulfilling. In addition, the university offers students a variety of social programs, cultural programs, religious and musical organizations and clubs. Honor and Recognition societies, as well as fraternities and sororities are also available to students. ECSU also has a variety of athletic sports events.

Students may also wish to take advantage of the historical sites in the greater Albemarle and southeastern Virginia areas. Williamsburg, Jamestown, Roanoke Island, Yorktown, several antebellum plantations, beaches and waterways are among sites within an easy drive from the campus.

United States Highways 17 and 158 make the city and the university easily accessible by automobile. City bus routes, hotels and motels are available to accommodate overnight visitors, and the university is just over an hour's drive from the Norfolk (Virginia) International Airport.

The university is situated on 114 acres which represent the campus proper. Another 68 acres comprise the former farm on Weeksville Road (N.C. 34); a 639-acre tract in Currituck County helps preserve the nation's diminishing wetlands and provides for educational research; and 35 acres serve residential or expansion purposes. There are also small sites in Utah and Virginia used, respectively, for geological instruction and institutional enhancement.

Mission Statement

As a constituent institution of The University of North Carolina System, Elizabeth City State University offers baccalaureate, professional, and master's degrees for a diverse student body. Our mission is to promote economic, social, and environmental progress for the people of northeastern North Carolina, the state, and the nation.

We achieve our commitment to the highest quality education by maintaining a rigorous focus on academic excellence through liberal arts programs and using innovative and flexible technology-based instruction models to enhance our signature areas: integrating technology with education, improving human health and wellness, and advancing the natural and aviation sciences.

Through teaching, research, and community engagement, the institution's rich heritage and its current multicultural student-centered focus provide a firm foundation for its endeavors. It serves the needs and aspirations of individuals and society; producing graduates for leadership roles and life-long learning.

Approved: Board of Governors for the University of North Carolina, November 2019

Vision Statement

Elizabeth City State University will be a premier public institution and a leading partner for economic, social, and environmental progress. We will be a destination institution that develops leaders who will make a positive difference now and in the future.

Institutional Goals:

According to the 2020-2025 Strategic Plan, the goals of the University are as follows:

Goal 1 – Academic Excellence:

Provide high-quality academic programs steeped in experiential learning that fully utilize our strengths as a university and enhance our region

Goal 1 Objectives

- 1.1 Implement real-life and applied research into the curriculum
- 1.2 Promote an academic environment centered on student success
- 1.3 Invest in faculty development to maximize excellence in teaching, research, and service
- 1.4 Expand our academic program offerings, services, and learning opportunities to align with community demand and meet the needs of employers
- 1.5 Expand the national prominence of our aviation program
- 1.6 Collaborate with regional K-12 local education agencies to enhance education and preparation quality and deliver best-practices

Goal 2 – Student Experience:

Create transformative experiences for our students that support academic outcomes and build Viking spirit

Goal 2 Objectives

- 2.1 Prepare students for life through robust co-curricular and extra-curricular campus activities
- 2.2 Enhance the on-campus living experience
- 2.3 Enhance the off-campus life experience
- 2.4 Ensure student services align with student needs and expectations
- 2.5 Build a competitive athletic program that develops our student athletes into well-rounded leaders as well as brings recognition and pride to the university
- 2.6 Cultivate and promote our unique Viking culture and pride
- 2.7 Ensure our campus is diverse and inclusive for all students

Goal 3 – Sustainable Growth:

Maximize our potential through improved enrollment processes and investment in recruitment, retention, and completion efforts

Goal 3 Objectives

- 3.1 Identify strategic opportunities for sustainable growth in new student population
- 3.2 Maximize retention, persistence, and graduation rates
- 3.3 Improve enrollment management practices and processes

Goal 4 – Institutional Advancement:

Promote and progress the institution through the engagement of our students, alumni, and other stakeholders

Goal 4 Objectives

- 4.1 Cultivate and promote a campus-wide culture of service and giving to the university
- 4.2 Engage all alumni in meaningful and strategic ways
- 4.3 Implement an effective marketing and communication plan to increase visibility and promote successes
- 4.4 Redesign our fund development philosophy and infrastructure to enable transformative giving to the university
- 4.5 Prioritize engagement with the community and region to support development

Goal 5 – Operational Excellence:

Ensure sound and efficient university operations and enhance our customer service quality and delivery

Goal 5 Objectives

- 5.1 Review and streamline business processes to improve efficiency
- 5.2 Establish a university-wide culture of excellent customer service
- 5.3 Leverage technology to support growth
- 5.4 Develop and maintain facilities that support academic growth and regional advancement
- 5.5 Attract and retain talented faculty, staff, and administrators

Goal 6 – Regional Development:

Secure our position as a catalyst in regional economic, social, and environmental development and facilitate collaboration with industry and government to improve our region

Goal 6 Objectives

- 6.1 Build partnerships with government and industry to drive economic development
- 6.2 Promote and support faculty applied research and consulting
- 6.3 Grow community-based experiences and develop opportunities for community involvement

Memberships

The university as a whole, or through components, has current memberships in various professional learned organizations. Memberships are held in the following:

American Council on Education
 American Association of Colleges for Teacher Education
 American Association of Higher Education American
 Association of School Administrators American
 Association of State Colleges and Universities American
 Library Association
 American Mathematical Society
 American Political Science Association
 Associated Collegiate Press
 Association to Advance Collegiate School of Business
 Association for General and Liberal Studies
 Association of Institutional Research (AIR)
 Association of International Educators
 Association for Supervision and Curriculum Development
 Association of College Administration Professionals
 Association of Teacher Education Institutions Carolinas
 Association of Collegiate Registrars and Admissions Officers
 Central Intercollegiate Athletic Association (CIAA)
 College Entrance Examination Board Colleges and University Personnel
 Association Colleges and University Systems Exchange (CAUSE)
 Council for the Advancement and Support of Education (CASE) Council
 for Opportunity in Education
 Eastern Communication Association
 Intercollegiate Press
 Mathematics Association of America
 National Association for Equal Opportunity in Higher Education
 National Association of College and University Attorneys
 National Association of College and University Business Officers
 National Association of Foreign Student Advisors
 National Association of Industrial Technology (NAIT)
 National Association of Student Aid Administrators
 National Collegiate Athletic Association
 National Communication Association National
 Cooperative Education Association North
 American Association of Summer Sessions
 North Carolina Academy of Science
 North Carolina Association for Institutional Research North
 Carolina Association of Colleges for Teacher Education North
 Carolina Association of Student Aid Administrators North
 Carolina Association of Summer Sessions
 North Carolina Cooperative Education Association
 North Carolina Library Association North
 Carolina Student Information System
 Society for College and University Planning
 Society for Human Resource Management
 Southern Association of College and University Business Officers
 Southern Association of Libraries
 Southern Association of Student Aid Administrators
 Student Information System Users University
 Council on International Programs University of
 North Carolina Exchange Programs

Accreditations

Elizabeth City State University is accredited by the Southern Association of Colleges and Schools Commission on Colleges (SACSCOC) to award baccalaureate and masters degrees. Contact the Commission on Colleges at 1866 Southern Lane, Decatur, Georgia 30033-4098 or call 404-679-4500 for questions about the accreditation of Elizabeth City State University.

School of Education and Business

AACSB - Association to Advance Collegiate Schools of Business

School of Science, Aviation, Health and Technology

ATMAE - Association of Technology, Management, and Applied Engineering

School of Humanities and Social Sciences

CSWE - Council on Social Work Education

NASM - National Association of Schools of Music

School of Education and Business

CAEP - Council for the Accreditation of Educator Preparation

NCATE - National Council for Accreditation of Teacher Education

NCDPI - North Carolina Department of Public Instruction

Board of Trustees (2022 – 2023)

Dr. Stephanie D.B. Johnson, Chairman

Tiffany Jones, Vice Chairman

Chris Evans, Secretary

Phyllis N. Bosomworth

Cheniec McCullough, President SGA *Ex-officio*

Bishop Kim W. Brown

James R. Copland IV

Andy Culpepper

Stephen Friedrich

Jan King Robinson

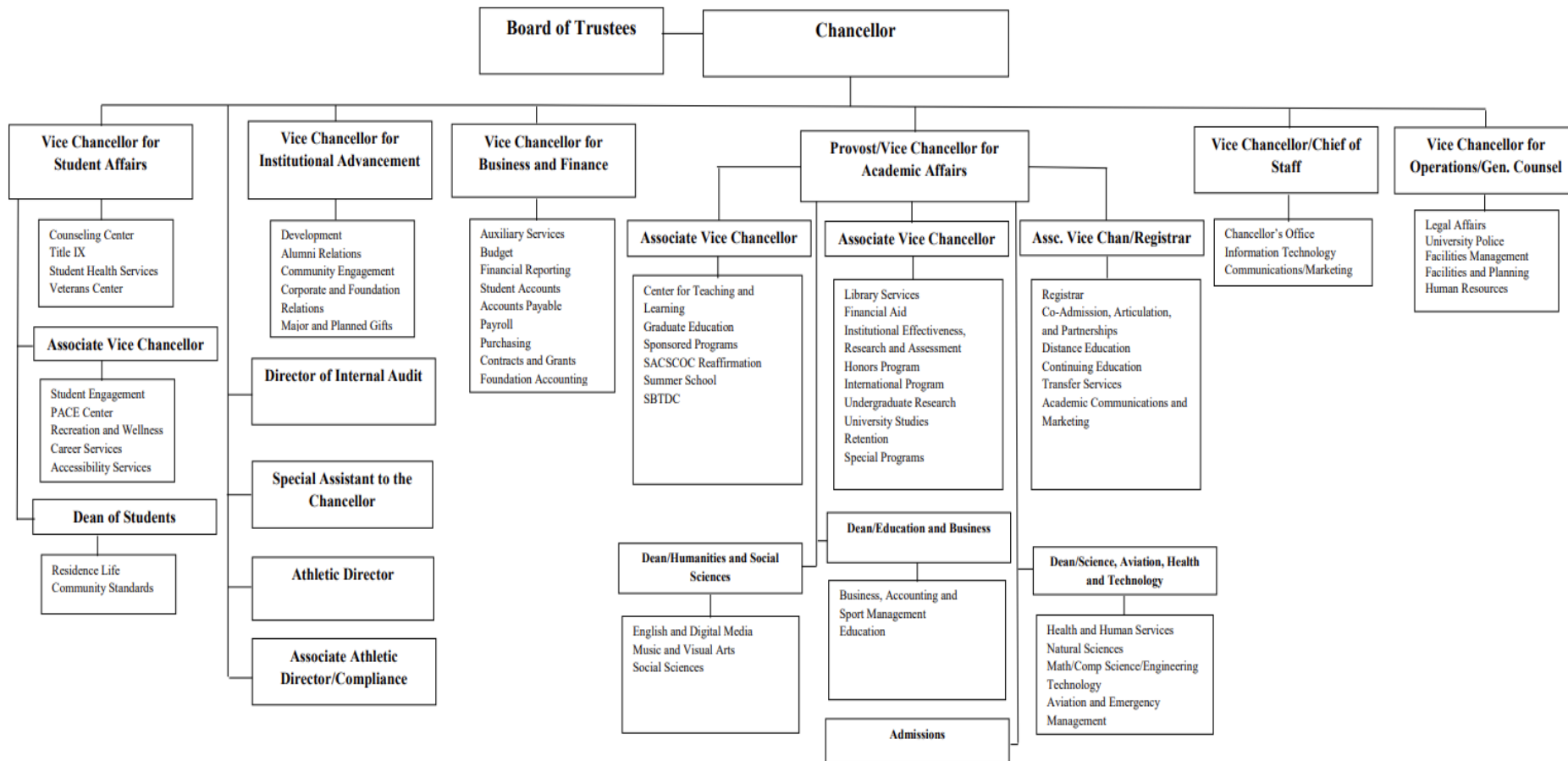
Johnny Tillett

Paul Tine

Justin Waddell

Organizational Structure

Elizabeth City State University Organizational Structure



November 2019

Important Telephone Numbers

Division	(252) 335 Extension	Fax
Admission	3305	3537
Alumni	3224	3489
Athletics	3891	3627
Campus Police	3266	3689
Chancellor's Office	3228	3731
Community Outreach	3633	3735
Dining Services	3660	3817
Director of Financial Aid	3283	3716
Director of Housing & Residence Life	3712	3090
Enrollment Management	8722	8779
Graduate Programs	3947	3146
Honors Programs	3294	3792
Human Resources	3251	3415
Internal Auditor	3561	3411
Library	3586	3446
Registrar	3300	3729
University Relations & Marketing	3103	3769
Vice Chancellor of Academic Affairs Provost's Office	3291	3493
School of Humanities & Social Sciences	3945	3469
School of Education and Business	3485	3491
School of Science, Aviation, Health and Technology	3846	3760
Vice Chancellor of Business and Finance	3320	3539
Vice Chancellor of Institutional Advancement	3225	3542
Dean of Student Affairs	3277	3502

Application, Acceptances, & Enrollees

New Freshmen

Fall	Applied	Accepted		Enrolled	
	#	#	%	#	%
2018	2486	1474	59.0	418	28.4
2019	2549	1643	65.6	385	23.0
2020	2572	1924	74.8	364	18.9
2021	3373	2624	77.8	324	12.4
2022	3927	2912	74.2	350	12.0

New Transfers

Fall	Applied	Accepted		Enrolled	
	#	#	%	#	%
2018	392	315	80.4	184	58.4
2019	338	300	88.8	158	52.7
2020	379	346	91.3	202	58.4
2021	371	345	92.2	197	57.1
2022	438	388	88.6	223	57.5

New Freshmen High School GPA

Fall	2018	2019	2020	2021	2022
1.00<1.49	0	0	0	0	0
1.50<1.99	0	0	0	2	1
2.00<2.49	11	12	14	13	15
2.50<2.99	151	146	147	128	116
3.00<3.49	139	129	106	82	117
3.50<4.00	11	94	91	96	101
Average GPA	3.20	3.14	3.13	3.20	3.23
Missing GPA	3	4	6	3	0

New Freshmen High School Class Rank

Fall		2018	2019	2020	2021	2022
# of New Freshmen (for those reporting class rank)	Top 20 th	72	53	62	57	51
	Second 20 th	109	99	75	60	72
	Third 20 th	120	103	109	94	86
	Fourth 20 th	65	68	58	46	45
	Bottom 20 th	11	60	58	67	45
Number of New Freshmen	# With Class Rank	377	383	362	324	350
	# Without Class Rank	41	2	2	0	51
	Total New Freshmen	418	385	364	324	350

Completed Applications & Acceptance from 21 NENC Counties

Northeastern North Carolina Counties	2020F		2021F		2022F	
	Applied	Accepted	Applied	Accepted	Applied	Accepted
Beaufort	33	28	17	10	13	10
Bertie	42	28	29	22	38	32
Camden	29	25	25	20	32	30
Chowan	36	27	28	22	51	35
Currituck	44	42	38	30	40	34
Dare	17	12	11	9	17	15
Edgecombe	71	47	59	44	44	34
Franklin	28	25	23	16	30	18
Gates	34	26	22	17	22	16
Halifax	113	77	77	59	81	67
Hertford	73	47	73	60	66	50
Hyde	4	3	4	3	3	1
Martin	0	0	0	0	0	0
Nash	65	51	63	48	78	49
Northampton	38	25	18	15	37	28
Pasquotank	162	145	180	153	222	192
Perquimans	33	25	34	29	35	27
Tyrrell	8	7	5	5	7	5
Vance	55	44	62	49	61	51
Warren	11	7	11	10	24	17
Washington	35	26	41	30	41	26
Total	931	713	841	651	942	737
Other NC applications	1628	1231	1626	1140	1655	1114
Out of state applications	670	495	1542	1002	2029	1200
Grand Total	3229	2439	4031	2818	4626	3051

Profile of Enrolled New Freshmen (Fall)

Enrollment Characteristics	2018	2019	2020	2021	2022
Headcount	418	385	364	324	350
FTE	417.50	383.30	362.30	324.0	349.5
Full-time	416	381	360	324	349
Part-time	2	4	4	0	1
Full-time %	99.52%	98.96%	98.90%	100.00%	99.71%
Part-time %	0.48%	1.04%	1.10%	0%	0.29%
Female	242	227	208	183	169
Male	176	158	156	141	181
Female %	57.89%	58.96%	57.14%	56.48%	48.29%
Male %	42.11%	41.04%	42.86%	43.52%	51.71%
In-State	299	307	274	218	227
Out-of-State	119	78	90	106	123
In-State %	71.53%	79.74%	75.27%	67.28%	64.86%
Out-of-State %	28.47%	20.26%	24.73%	32.72%	35.14%
American Indian or Alaskan Native	2	0	0	1	4
Asian	0	2	0	1	0
Black or African American	303	289	263	242	253
Hispanics	22	19	24	14	17
Native Hawaiian or Other Pacific Islander	0	0	0	0	0
Non-Resident Alien	2	1	0	1	4
Race and Ethnicity Unknown	11	8	6	3	6
Two or more races	25	23	26	22	29
White	53	43	45	40	37
American Indian or Alaskan Native %	0.48%	0.52%	0%	0.31%	1.14%
Asian %	0%	0%	0%	0.31%	0%
Black or African American %	72.49%	75.06%	72.25%	74.69%	72.29%
Hispanics %	5.26%	4.94%	6.59%	4.32%	4.86%
Native Hawaiian or Other Pacific Islander %	0%	0%	0%	0%	0%
Non-Resident Alien %	0.48%	0.26%	0%	0.31%	1.14%
Race and Ethnicity Unknown %	2.63%	2.08%	1.65%	0.93%	1.71%
Two or more races %	5.98%	5.97%	7.14%	6.79%	8.29%
White %	12.68%	11.17%	12.36%	12.35%	10.57%
Boarding	317	300	263	253	290
Commuter	101	85	101	71	60
Boarding	75.84%	77.92%	72.25%	78.09%	82.86%
Commuter	24.16%	22.08%	27.75%	21.91%	17.14%
Avg. SAT Read	425	320	311	502	437
Avg. SAT Math	419	329	306	474	449
Avg. SAT Writ	405	385			
Avg. SAT Total	1,249	1,034		976	

Profile of Enrolled New Freshmen (Spring)

Enrollment Characteristics	2019	2020	2021	2022	2023
Headcount	24	20	18	23	9
FTE	24.00	19.50	18.00	22.50	9.00
Full-time	24	19	18	22	9
Part-time	0	1	0	1	0
Full-time %	100%	95.00%	100.00%	95.65%	100.00%
Part-time %	0%	5.00%	0%	4.35%	0%
Female	13	12	7	13	3
Male	11	8	11	10	6
Female %	54.17%	60.00%	38.89%	56.52%	33.33%
Male %	45.83%	40.00%	61.11%	43.48%	66.67%
In-State	20	17	14	15	6
Out-of-State	4	3	4	8	3
In-State %	83.33%	85.00%	77.78%	65.22%	66.67%
Out-of-State %	16.67%	15.00%	22.22%	34.78%	33.33%
American Indian or Alaskan Native	0	0	0	0	0
Asian	0	0	0	1	0
Black or African American	15	12	10	13	6
Hispanics	1	3	3	1	0
Native Hawaiian or Other Pacific Islander	0	1	0	0	0
Non-Resident Alien	0	0	0	1	0
Race and Ethnicity Unknown	1	0	0	0	0
Two or more races	3	1	0	3	0
White	4	3	5	4	3
American Indian or Alaskan Native %	0.00%	0.00%	0.00%	0.00%	0.00%
Asian %	0.00%	0.00%	0.00%	4.35%	0.00%
Black or African American %	62.50%	60.00%	55.56%	56.52%	66.67%
Hispanics %	4.17%	15.00%	16.67%	4.35%	0.00%
Native Hawaiian or Other Pacific Islander %	0%	5.00%	0%	0%	0.00%
Non-Resident Alien %	0%	0%	0%	4.35%	0.00%
Race and Ethnicity Unknown %	4.17%	0%	0%	0%	0.00%
Two or more races %	12.50%	5.00%	0%	13.04%	0.00%
White %	16.67%	15.00%	27.78%	17.39%	33.33%
Boarding	15	14	14	8	5
Commuter	9	6	4	15	4
Boarding %	62.50%	70.00%	77.78%	34.78%	55.56%
Commuter %	37.50%	30.00%	22.22%	65.22%	44.44%
Avg. SAT Read	472	330	416		320
Avg. SAT Math	444	370	406		330
Avg. SAT Writ	402				
Avg. SAT Total	1,318		1,350		

Profile of Enrolled New Transfers (Fall)

Enrollment Characteristics	2018	2019	2020	2021	2022
Headcount	184	173	202	196	223
FTE	178.00	165.00	185.80	179.00	207.5
Full-time	169	155	166	158	186
Part-time	15	18	36	38	37
Full-time %	91.85%	89.60%	82.18%	80.61%	83.41%
Part-time %	8.15%	10.40%	17.82%	19.39%	16.59%
Female	110	96	122	117	117
Male	74	77	80	79	106
Female %	59.78%	55.49%	60.40%	59.69%	52.47%
Male %	40.22%	44.51%	39.60%	40.31%	47.53%
In-State	122	134	162	143	159
Out-of-State	62	39	40	53	64
In-State %	66.30%	77.46%	80.20%	72.96%	71.30%
Out-of-State %	33.70%	22.54%	19.80%	27.04%	28.70%
American Indian or Alaskan Native	0	1	1	1	0
Asian	0	1	1	1	2
Black or African American	118	93	118	113	131
Hispanics	7	6	8	13	12
Native Hawaiian or Other Pacific Islander	0	0	0	0	0
Non-Resident Alien	2	4	2	2	5
Race and Ethnicity Unknown	2	3	3	4	0
Two or more races	9	10	7	10	11
White	46	55	62	52	62
American Indian or Alaskan Native %	0%	0.58%	0.50%	0.51%	0%
Asian %	0%	0.58%	0.50%	0.51%	0.90%
Black or African American %	64.13%	53.76%	58.42%	57.65%	58.74%
Hispanics %	3.80%	3.47%	3.96%	6.63%	5.36%
Native Hawaiian or Other Pacific Islander %	0%	0%	0%	0%	0%
Non-Resident Alien %	1.09%	2.31%	0.99%	1.02%	2.24%
Race and Ethnicity Unknown %	1.09%	1.73%	1.49%	2.04%	0%
Two or more races %	4.89%	5.78%	3.47%	5.10%	4.93%
White %	25.00%	31.79%	30.69%	26.53%	27.80%
Boarding	73	59	48	70	88
Commuter	111	114	152	126	135
Boarding %	39.67%	34.10%	23.76%	35.71%	39.46%
Commuter %	60.33%	65.90%	76.24%	64.29%	60.54%
Avg. SAT Read	440	516	403	443	408
Avg. SAT Math	386	487	403	430	455
Avg. SAT Writ	420	354	397	350	310
Avg. SAT Total	1,246	1,357	1,203	1,223	

Profile of Enrolled New Transfers (Spring)

Enrollment Characteristics	2019	2020	2021	2022	2023
Headcount	49	67	88	75	67
FTE	44.25	63.00	77.25	69.00	62.00
Full-time	39	57	65	61	56
Part-time	10	10	23	14	11
Full-time %	79.59%	85.07%	73.86%	81.33%	83.58%
Part-time %	20.41%	14.93%	26.14%	18.67%	16.42%
Female	29	42	54	43	35
Male	20	25	34	32	32
Female %	59.18%	62.69%	61.36%	57.33%	52.24%
Male %	40.82%	37.31%	38.64%	42.67%	47.76%
In-State	37	55	74	50	46
Out-of-State	12	12	14	25	21
In-State %	75.51%	82.09%	84.09%	66.67%	68.66%
Out-of-State %	24.49%	17.91%	15.91%	33.33%	31.34%
American Indian or Alaskan Native	1	1	2	0	1
Asian	0	0	0	0	1
Black or African American	21	32	43	54	41
Hispanics	2	5	5	1	4
Native Hawaiian or Other Pacific Islander	0	0	0	0	1
Non-Resident Alien	1	3	1	2	0
Race and Ethnicity Unknown	0	0	0	1	0
Two or more races	2	3	4	1	3
White	22	23	33	16	16
American Indian or Alaskan Native %	2.04%	1.49%	2.27%	0%	1.49%
Asian %	0%	0%	0%	0%	1.49%
Black or African American %	42.86%	47.76%	48.86%	72.00%	61.19%
Hispanics %	4.08%	7.46%	5.68%	1.33%	5.97%
Native Hawaiian or Other Pacific Islander %	0%	0%	0%	0%	1.49%
Non-Resident Alien %	2.04%	4.48%	1.14%	2.67%	0%
Race and Ethnicity Unknown %	0%	0%	0%	1.33%	0%
Two or more races %	4.08%	4.48%	4.55%	1.33%	4.48%
White %	44.90%	34.33%	37.50%	21.33%	23.88%
Boarding	10	11	13	18	24
Commuter	39	56	75	57	43
Boarding %	20.41	16.42%	14.77%	24.00%	35.82%
Commuter %	79.59%	83.58%	85.23%	76.00%	64.18%
Avg. SAT Read	417	470	437	360	
Avg. SAT Math	390	433	400	367	
Avg. SAT Writ	470			370	
Avg. SAT Total	1,380			1,097	

Profile of Enrolled Undergraduates (Fall)

Enrollment Characteristics	2018	2019	2020	2021	2022
Headcount	1,638	1,697	1,912	1,957	2,033
FTE	1,526.00	1,604.00	1,754.00	1,778.00	1,854.00
Full-time	1,425	1,518	1,623	1,627	1,704
Part-time	213	179	289	330	329
Full-time %	87.00%	89.45%	84.88%	83.14%	83.82%
Part-time %	13.00%	10.55%	15.12%	16.86%	16.18%
Female	940	1,005	1,129	1,171	1,157
Male	692	783	783	786	876
Female %	57.39%	59.22%	59.05%	59.84%	56.91%
Male %	42.61%	40.78%	40.95%	40.16%	43.09%
In-State	1,354	1,393	1,549	1,500	1,495
Out-of-State	284	304	363	457	538
In-State %	82.66%	82.09%	81.01%	76.65%	73.54%
Out-of-State %	17.34%	17.91%	18.99%	23.35%	26.46%
American Indian or Alaskan Native	8	6	5	10	11
Asian	10	11	10	9	7
Black or African American	1,140	1,175	1,308	1,338	1,399
Hispanics	68	72	92	92	90
Native Hawaiian or Other Pacific Islander	2	1	2	3	0
Non-Resident Alien	5	10	13	11	19
Race and Ethnicity Unknown	57	37	41	48	36
Two or more races	60	81	97	102	116
White	288	304	344	344	353
American Indian or Alaskan Native %	0.49%	0.35%	0.26%	0.51%	0.54%
Asian %	0.61%	0.65%	0.52%	0.46%	0.34%
Black or African American %	69.60%	69.24%	68.41%	68.37%	68.81%
Hispanics %	4.15%	4.24%	4.81%	4.70%	4.43%
Native Hawaiian or Other Pacific Islander %	0.12%	0.06%	0.10%	0.15%	0%
Non-Resident Alien %	0.31%	0.59%	0.68%	0.56%	0.93%
Race and Ethnicity Unknown %	3.48%	2.18%	2.14%	2.45%	1.77%
Two or more races %	3.66%	4.77%	5.07%	6.21%	5.80%
White %	17.58%	17.91%	17.99%	17.58%	17.36%
Boarding	841	900	769	939	1,028
Commuter	797	797	1,143	1,018	1,005
Boarding %	51.34%	53.03%	40.22%	47.98%	50.57%
Commuter %	48.66%	46.97%	59.78%	52.02%	49.43%
Avg. SAT Read	425	225	200	423	415
Avg. SAT Math	419	232	201	416	442
Avg. SAT Writ	379	380	397	388	339
Avg. SAT Total	1,223	837	798	924	
Avg. ECSU GPA	2.77	2.86	2.98	2.93	2.84
Avg. Age	22.7	22.5	22.9	23.9	23.7

Profile of Enrolled Undergraduates (Spring)

Enrollment Characteristics	2019	2020	2021	2022	2023
Headcount	1,454	1,594	1,794	1,812	1,832
FTE	1,356.00	1,486.00	1,625.00	1,626.00	1,639.00
Full-time	1,270	1,387	1,498	1,473	1,489
Part-time	184	207	296	339	343
Full-time %	87.35%	87.01%	83.50%	81.29%	81.28%
Part-time %	12.65%	12.99%	16.50%	18.71%	18.72%
Female	849	919	1,059	1,087	1,032
Male	605	675	735	725	800
Female %	58.39%	57.65%	59.03%	59.99%	56.33%
Male %	41.61%	42.35%	40.97%	40.01%	43.67%
In-State	1,207	1,321	1,435	1,363	1,339
Out-of-State	247	273	359	449	493
In-State %	83.01%	82.87%	79.99%	75.22%	73.09%
Out-of-State %	16.99%	17.13%	20.01%	24.78%	26.91%
American Indian or Alaskan Native	7	4	8	8	11
Asian	11	10	10	7	10
Black or African American	997	1,088	1,203	1,242	1,234
Hispanics	61	69	86	83	92
Native Hawaiian or Other Pacific Islander	1	2	2	2	1
Non-Resident Alien	5	13	13	14	16
Race and Ethnicity Unknown	44	37	45	37	38
Two or more races	60	82	94	92	101
White	268	289	333	327	329
American Indian or Alaskan Native %	0.48%	0.25%	0.45%	0.44%	0.05%
Asian %	0.76%	0.63%	0.56%	0.39%	0.55%
Black or African American %	68.57%	68.26%	67.06%	68.54%	67.36%
Hispanics %	4.20%	4.33%	4.79%	4.58%	5.02%
Native Hawaiian or Other Pacific Islander %	0.07%	0.13%	0.11%	0.11%	0.05%
Non-Resident Alien %	0.34%	0.82%	0.72%	0.77%	0.87%
Race and Ethnicity Unknown %	3.03%	2.32%	2.51%	2.04%	2.07%
Two or more races %	4.13%	5.14%	5.24%	5.08%	5.51%
White %	18.43%	18.13%	18.56%	18.05%	17.96%
Boarding	752	828	673	884	930
Commuter	702	766	1,121	928	902
Boarding %	51.72%	51.94%	37.51%	48.79%	50.76%
Commuter %	48.28%	48.06%	62.49%	51.21%	49.24%
Avg. SAT Read	411	406	414	412	280
Avg. SAT Math	404	419	408	426	290
Avg. SAT Writ	368	411	334	388	270
Avg. SAT Total	1,168	1,248	1,156	1,200	840
Avg. ECSU GPA	2.79	2.83	2.98	2.83	2.85
Avg. Age	22.7	22.7	23.6	24.2	23.9

Profile of Enrolled Graduates (Fall)

Enrollment Characteristics	2018	2019	2020	2021	2022
Headcount	40	75	90	97	116
FTE	31.00	62.50	69.00	78.00	88.00
Full-time	8	26	27	36	31
Part-time	32	49	63	61	85
Full-time %	20.00%	34.67%	30.00%	37.11%	26.72%
Part-time %	80.00%	65.33%	70.00%	62.89%	73.28%
Female	30	57	66	76	90
Male	10	18	24	21	26
Female %	75.00%	76.00%	73.33%	78.35%	77.59%
Male %	25.00%	24.00%	26.67%	21.65%	22.41%
In-State	38	70	81	87	101
Out-of-State	2	5	9	10	15
In-State %	95.00%	93.33%	90.00%	89.69%	87.07%
Out-of-State %	5.00%	6.67%	10.00%	10.31%	12.93%
American Indian or Alaskan Native	0	0	1	0	0
Asian	0	0	1	1	1
Black or African American	20	39	39	44	66
Hispanics	0	3	3	4	3
Non-Resident Alien					1
Race and Ethnicity Unknown	14	19	23	27	25
Two or more races				1	4
White	6	14	23	20	16
American Indian or Alaskan Native %	0%	0%	1.11%	0%	0%
Asian %	0%	0%	1.11%	1.03%	0.86%
Black or African American %	50.00%	52.00%	43.33%	45.36%	56.90%
Hispanics %	0%	4.00%	3.33%	4.12%	2.59%
Non-Resident Alien %					0.86%
Race and Ethnicity Unknown %	35.00%	25.33%	25.56%	27.84%	21.55%
Two or more races %				1.03%	3.45%
White %	15.00%	18.67%	25.56%	20.62%	13.79%
Boarding	12	8	3	3	4
Commuter	28	67	87	94	112
Boarding %	30.00%	10.67%	3.33%	3.09%	3.45%
Commuter %	70.00%	89.33%	96.67%	96.91%	96.55%
Avg. ECSU GPA	3.75	3.60	3.61	3.57	3.63
Avg. Age	33.2	33.3	33.3	33.9	34.1

Profile of Enrolled Graduates (Spring)

Enrollment Characteristics	2019	2020	2021	2022	2023
Headcount	54	76	90	85	84
FTE	44.50	66.50	70.50	67.50	67.25
Full-time	17	41	24	25	28
Part-time	37	35	66	60	56
Full-time %	31.48%	53.95%	26.67%	29.41%	33.33%
Part-time %	68.52%	46.05%	73.33%	70.59%	66.67%
Female	39	58	68	68	67
Male	15	18	22	17	17
Female %	72.22%	76.32%	75.56%	80.00%	79.76%
Male %	27.78%	23.68%	24.44%	20.00%	20.24%
In-State	51	71	79	77	72
Out-of-State	3	5	11	8	12
In-State %	94.44%	93.42%	87.78%	90.59%	85.71%
Out-of-State %	5.56%	6.58%	12.22%	9.41%	14.29%
American Indian or Alaskan Native	0	0	0	0	0
Asian	0	0	1	1	1
Black or African American	26	36	42	35	53
Hispanics	1	3	3	4	1
Non-Resident Alien	2	0	0	0	1
Race and Ethnicity Unknown	19	20	23	25	19
Two or more races	0	0	0	2	2
White	6	17	21	18	7
American Indian or Alaskan Native	0%	0%	0%	0%	0%
Asian %	0%	0%	1.11%	1.18%	1.19%
Black or African American %	48.15%	47.37%	46.67%	41.18%	63.10%
Hispanics %	1.85%	3.95%	3.33%	4.71%	1.19%
Non-Resident Alien %	3.70%	0%	0%	0%	1.19%
Race and Ethnicity Unknown %	35.19%	26.32%	25.56%	29.41%	22.62%
Two or more races %	0%	0%	0%	2.35%	2.38%
White %	11.11%	22.37%	23.33%	21.18%	8.33%
Boarding	13	8	4	2	5
Commuter	41	68	86	83	79
Boarding %	24.07%	10.53%	4.44%	2.35%	5.95%
Commuter %	75.93%	89.47%	95.56%	97.65%	94.05%
Avg. ECSU GPA	3.47	3.52	3.61	3.73	3.52
Avg. Age	33.3	33.3	32.6	33.5	33.9

All Students by Classification (Fall and Spring)

	2018F	2019F	2020F	2021F	2022F
New Freshman	41	385	364	324	350
Other Freshman	8	180	181	266	186
Sophomores	16	424	475	389	414
Juniors	0	331	402	439	470
Seniors	35	313	402	446	488
Unclassified	0	65	88	93	125
Graduates	28	74	90	97	116
TOTAL	1678	1772	2002	2054	2149

	2019S	2020S	2021S	2022S	2023S
New Freshman	23	25	18	23	9
Other Freshman	38	354	400	352	367
Sophomores	5	416	400	385	352
Juniors	33	388	434	443	476
Seniors	9	342	443	458	483
Unclassified	31	69	99	139	145
Graduates	4	76	90	85	84
TOTAL	1,508	1,670	1,884	1,897	1,916

All Students by Majors Fall

Department	Major	2018	2019	2020	2021	2022
Aviation and Emergency Management	Aviation Science	68	98	127	153	180
	Emergency Management	4	10	22	24	24
	Unmanned Aircraft Systems		1	3	7	9
	Total	72	109	152	184	213
Business Accounting and Sport Management	Accounting	36	35	45	44	28
	Business Administration	196	205	219	232	256
	Sport Management	52	58	66	61	85
	Total	284	298	330	337	369
Education	Birth through Kindergarten	30	31	36	36	39
	Elementary Education	66	58	72	75	72
	Elementary Education (G)	3	36	49	52	66
	School Administration	17	18	16	21	26
	Special Education, General	12	15	18	16	16
	Total	128	158	191	200	219
English and Digital Media	Communication Studies	40	23	9	2	
	Digital Media Arts		11	30	31	42
	English	25	29	31	28	17
	Total	65	63	70	61	59
Health and Human Studies	Kinesiology	80	104	129	147	135
	Pharmaceutical Science	42	40	35	35	33
	Physical Education and Health	19	3	1		
	Psychology	104	97	94	106	119
	Social Work	82	107	125	97	78
	Total	327	351	384	385	365
Mathematics Computer Science and Engineering Technology	Computer Information Science	56	52	60	67	70
	Engineering Technology	53	57	54	57	50
	Mathematics	17	11	8	5	8
	Mathematics (G)	11	13	14	11	9
	Total	137	133	136	140	137
Music and Visual Arts	Graphic Design	43	43	57	58	60
	Music	45	42	43	35	33
	Total	88	85	100	93	93
Natural Sciences	Biology	161	152	147	125	129

	Biology (G)	9	8	11	13	12
	Chemistry	15	13	14	5	4
	Sustainability Studies				1	5
	Total	185	173	172	144	150
Social Sciences	Criminal Justice	133	156	178	158	149
	History	31	31	24	21	23
	Homeland Security		1	22	42	42
	Interdisciplinary Studies	64	81	82	119	180
	Political Science	1				
	Sociology	17	9	2		
	Total	246	278	308	340	394
Undecided/Special/Certification	Certification	13	7	15	34	25
	Continuing Education	1				
	Special	52	42	67	77	96
	Special Graduate			1	1	3
	UNC Exchange	19	22	45	37	
	Undecided	61	53	31	21	26
	Total	146	124	159	170	150
Grand Total		1678	1772	2002	2054	2149

Enrollment by State Fall 2018-2022

State	2018	2019	2020	2021	2022
Alabama	2	3		1	4
Alaska	1				
Arizona			1	1	1
Arkansas				1	1
Army Europe	1	1			
Army Pacific	1		1	1	
California	5	1		1	2
Colorado				2	2
Connecticut	2	4	4	5	3
Delaware	5	5	5	4	
Dist. of Columbia	10	11	15	16	23
Florida	13	15	8	7	18
Foreign Country	3	9	11	10	20
Georgia	4	10	11	22	23
Illinois	2	1	2	2	4
Indiana			1	1	3
Kansas				1	1
Kentucky	2	2	1		1
Louisiana		1	4	5	3
Maine				1	
Maryland	27	35	56	59	79
Massachusetts				1	3
Michigan	1	3	4	3	13
Minnesota				1	2
Mississippi				1	1
Missouri					2
Nevada	2	2	1		2
New Jersey	11	10	13	22	20
New York	8	9	7	8	12
North Carolina	1442	1504	1691	1687	1695
Ohio	2	2	2	8	8
Oklahoma				1	1
Pennsylvania	3	5	6	13	11
South Carolina	6	6	10	20	21
Tennessee				2	2
Texas	2	1	3	7	17

Virgin Islands					1
Virginia	122	131	144	138	149
Washington	1	1	1	1	1
Wisconsin				1	
Grand Total	1678	1772	2002	2054	2149

Enrollment by Counties for North Carolina

County	2018	2019	2020	2021	2022
Alamance	6	11	11	14	16
Alexander				1	1
Anson			3	3	2
Ashe	1				
Beaufort	18	19	18	20	17
Bertie	52	43	39	29	37
Bladen	2	3	2	3	2
Brunswick	5	2		1	2
Buncombe	3	2	4	2	5
Burke	1	3	1	2	2
Cabarrus	3	9	16	19	21
Caldwell		2	1	3	3
Camden	51	50	55	55	60
Carteret	3	3	5	6	5
Caswell		1			
Catawba	3	1	2	2	2
Chatham	3	2	1	2	2
Cherokee		1	1		1
Chowan	45	48	51	51	42
Clay			1	1	
Cleveland		3	3	2	1
Columbus	2	3	3	3	9
Craven	9	13	16	19	20
Cumberland	19	19	31	40	34
Currituck	36	61	74	64	57
Dare	10	16	16	14	17
Davidson	3	5	4	6	7
Davie	2	1			
Duplin	7	4	3	6	3
Durham	20	22	31	31	33
Edgecombe	28	36	38	31	23
Forsyth	12	16	20	21	34
Franklin	10	12	21	17	14
Gaston	5	7	7	7	10
Gates	23	23	32	34	36
Granville	5	4	2	3	5
Greene	3	1	4	2	2
Guilford	31	35	43	46	43
Halifax	67	75	58	67	60
Harnett	6	7	8	5	6
Haywood				1	2
Henderson			3	1	2
Hertford	72	56	51	49	47

Hoke	7	6	2	1	2
Hyde	4	4	5	6	5
Iredell	5	4	5	8	6
Jackson	1	1	2		
Johnston	8	10	18	16	14
Jones	4	3	3	3	4
Lee	2	3	3		2
Lenoir	6	10	10	9	12
Lincoln	2	1	2	4	4
Macon	1	1	2	1	
Madison				1	
Martin	7	5	2	3	3
McDowell	12	19	17	13	14
Mecklenburg	47	51	70	89	80
Montgomery	1	1	3	2	
Moore			2	4	4
Nash	15	19	21	25	23
New Hanover	3	2	5	7	8
None	16	9	9	9	15
Northampton	30	26	27	20	13
Onslow	23	23	35	26	32
Orange	1	2	3	5	4
Pamlico	4	6	5	7	5
Pasquotank	350	364	376	363	378
Pender	3	2	3	3	4
Perquimans	63	45	53	49	43
Person		1	4	4	5
Pitt	27	50	57	69	59
Randolph	1	1	2	3	4
Richmond	1	2	2	2	1
Robeson	5	6	6	4	4
Rockingham	3	2	3	4	1
Rowan	2	2	2	1	2
Rutherford	1			2	2
Sampson	1	1	3	2	6
Scotland	2	3	5	2	
Stanly	2	4	3	4	3
Stokes			2	2	3
Surry	1	1	4	3	3
Swain					1
Tyrrell	11	12	12	8	11
Union	10	9	14	10	8
Vance	7	12	17	19	13
Wake	78	84	106	105	115
Warren	5	7	3	4	7
Washington	38	27	29	32	36
Wayne	15	19	27	27	27

Wilkes	1	1	1	1	1
Wilson	14	12	16	14	18
Grand Total	1406	1492	1680	1679	1690

**Enrollment from 21 *NENC Counties
(New Freshmen)**

Northeastern North Carolina Counties	2018	2019	2020	2021	2022
BEAUFORT	5		5	5	6
BERTIE	13	6	4	2	5
CAMDEN	5	10	8	5	7
CHOWAN	9	10	9	3	1
CURRITUCK	10	10	12	5	5
DARE	1	3	2	0	4
EDGECOMBE	9	12	3	3	2
FRANKLIN	3	5	5	3	1
GATES	7	2	10	6	1
HALIFAX	16	11	4	6	7
HERTFORD	11	6	6	7	6
HYDE	3	1		2	0
MARTIN	2	8		0	0
NASH	7	6	6	5	3
NORTHAMPTON	8	3	2	0	1
PASQUOTANK	70	56	31	47	45
PERQUIMANS	5	6	5	4	3
TYRRELL	1			0	2
VANCE	3	4	6	7	2
WARREN	1	2	1	2	3
WASHINGTON	11	7	8	5	6
# of NENC students	200	168	127	117	112
Total New Freshman Enrollment	418	385	364	324	350
% of NENC Students	47.9	43.6	34.9	36.1	32.0
Total In-State New Freshman	299	307	274	230	235
% of In-State Students from NENC	66.9	54.7	46.4	50.9	47.7

**Enrollment from 21 *NENC Counties
(New Transfers)**

Northeastern North Carolina Counties	2018	2019	2020	2021	2022
BEAUFORT	1	4	1	0	0
BERTIE	8	2	1	1	5
CAMDEN	7	10	6	7	10
CHOWAN	5	3	7	5	1
CURRITUCK	5	12	9	9	10
DARE	5	3	3	4	4
EDGECOMBE	3	2	2	0	1
FRANKLIN			6	1	0
GATES	2		5	2	5
HALIFAX	8	11	6	6	5
HERTFORD	5	6	4	4	1
MARTIN	2	1	1	2	0
NASH		2	2	1	1
NORTHAMPTON	3	2	6	1	0
PASQUOTANK	31	30	34	26	33
PERQUIMANS	2	7	7	7	2
TYRRELL	1	3	1	1	0
VANCE	2	1	1	0	0
WARREN		1		0	0
WASHINGTON	1	1	6	2	1
# of NENC students	91	101	108	79	82
Total New Transfer enrollment	184	173	202	196	223
% of NENC Students	49.5	58.4	53.5	40.3	36.8
Total In-State New Transfers	122	134	162	162	161
% of In-State Students from NENC	74.6	75.4	66.7	48.8	50.9

**Enrollment from 21 *NENC Counties
(Undergraduates)**

Northeastern North Carolina Counties	2018	2019	2020	2021	2022
BEAUFORT	18	19	18	18	15
BERTIE	56	41	36	27	34
CAMDEN	50	53	55	58	60
CHOWAN	46	49	50	49	33
CURRITUCK	35	54	71	63	57
DARE	9	16	14	14	15
EDGECOMBE	26	32	34	27	18
FRANKLIN	11	14	21	17	12
GATES	23	22	31	34	34
HALIFAX	67	71	57	64	57
HERTFORD	70	54	49	49	44
HYDE	4	4	4	6	5
MARTIN	17	20	15	15	1
NASH	16	20	24	28	19
NORTHAMPTON	32	29	31	24	14
PASQUOTANK	349	358	369	351	339
PERQUIMANS	58	43	48	40	35
TYRRELL	11	10	12	8	12
VANCE	8	13	17	20	12
WARREN	6	8	2	4	8
WASHINGTON	38	27	34	38	32
# of NENC students	950	957	992	954	887
Total Undergrad enrollment	1,638	1,697	1,912	1,956	2,033
% of NENC Students	58.0	56.4	51.9	48.8	43.6
Total In-State Undergrad	1,281	1,330	1,549	1,592	1,588
% of In-State Students from NENC	74.2	72.0	64.0	59.9	55.9

Summer School Profile of Enrolled Students (Undergraduates)

Enrollment Characteristics	2018	2019	2020	2021	2022
	Session	Session	Session	Session	Session
Headcount	284	404	507	807	818
FTE	128.50	208.5	263.8	409.8	450.80
Full-time	9	45	55	72	113
Part-time	275	359	452	735	705
Full-time %	3.17%	11.14%	10.85%	8.92%	13.81%
Part-time %	96.83%	88.86%	89.15%	91.08%	86.19%
Female	180	261	329	501	517
Male	104	143	178	306	301
Female %	63.38%	64.60%	64.89%	62.08%	63.20%
Male %	36.62%	35.40%	35.11%	37.92%	36.80%
In-State	259	380	470	657	667
Out-of-State	25	24	37	150	151
In-State %	91.20%	94.06%	92.70%	81.41%	81.54%
Out-of-State %	8.80%	5.94%	7.30%	18.59%	18.46%
American Indian or Alaskan Native	1	2	3	7	5
Asian	1	4	3	2	2
Black or African American	200	267	357	582	600
Hispanics	10	18	19	39	33
Native Hawaiian or Other Pacific Islander	2	0	1	0	0
Non-Resident Alien	0	1	3	3	2
Race and Ethnicity Unknown	11	9	9	14	9
Two or more races	7	14	28	41	40
White	52	89	84	119	127
American Indian or Alaskan Native %	0.35%	0.50%	0.59%	0.87%	0.61%
Asian %	0.35%	0.99%	0.59%	0.25%	0.24%
Black or African American %	70.42%	66.09%	70.41%	72.12%	73.35%
Hispanics %	3.52%	4.46%	3.75%	4.83%	4.03%
Native Hawaiian or Other Pacific Islander %	0.70%	0.0%	0.20%	0.00%	0.00%
Non-Resident Alien %	0.0%	0.25%	0.59%	0.37%	0.24%
Race and Ethnicity Unknown %	3.87%	2.23%	1.78%	1.73%	1.10%
Two or more races %	2.46%	3.47%	5.52%	5.08%	4.89%
White %	18.31%	22.03%	16.57%	14.75%	15.53%
Avg. SAT Read	421	418	508	474	373
Avg. SAT Math	427	420	502	450	395
Avg. SAT Writ				390	372
Avg. SAT Total				1,314	
Avg. ECSU GPA	2.74	2.85	2.93	2.80	2.81
Avg. Age	25.2	25.1	25.1	25.2	26.4

Summer School Profile of Enrolled Students (Graduates)

Enrollment Characteristics	2018	2019	2020	2021	2022
	Session	Session	Session	Session	Session
Headcount	14	35	51	48	57
FTE	10.25	27.75	40.75	39.00	42.75
Full-time	1	11	20	22	16
Part-time	13	24	31	26	41
Full-time %	7.14%	31.43%	39.22%	45.83%	28.07%
Part-time %	92.86%	68.57%	60.78%	54.17%	71.93%
Female	12	25	42	37	48
Male	2	10	9	11	9
Female %	85.71%	71.43%	82.35%	77.08%	84.21%
Male %	14.29%	28.57%	17.65%	22.92%	15.79%
In-State	14	33	47	42	51
Out-of-State	0	2	4	6	6
In-State %	100%	94.29%	92.16%	87.50%	89.47%
Out-of-State %	0%	5.71%	7.84%	12.50%	10.53%
American Indian or Alaskan Native	0	0	0	0	0
Asian	0	0	1	0	1
Black or African American	8	18	20	24	26
Hispanics	0	0	2	1	2
Native Hawaiian or Other Pacific Islander	0	0	0	0	0
Non-Resident Alien	0	1	0	0	1
Race and Ethnicity Unknown	1	9	15	14	14
Two or more races	0	0	0	1	2
White	5	7	13	8	11
American Indian or Alaskan Native	0%	0%	0%	0%	0%
Asian %	0%	0%	1.96%	0%	1.75%
Black or African American %	57.14%	51.43%	39.22%	50.00%	45.61%
Hispanics %	0%	0%	3.92%	2.08%	3.51%
Native Hawaiian or Other Pacific Islander %	0%	0%	0%	0%	0%
Non-Resident Alien %	0%	2.86%	0%	0%	1.75%
Race and Ethnicity Unknown %	7.14%	25.71%	29.41%	29.17%	24.56%
Two or more races %	0%	0%	0%	2.08%	3.51%
White %	35.71%	20.00%	25.49%	16.67%	19.30%
Avg. ECSU GPA	3.86	3.66	3.76	3.12	3.67
Avg. Age	34.6	34.4	32.7	33.3	34.7

Headcount by Total Student Credit Hours (Undergraduates)

Credit Hrs	2018		2019		2020		2021		2022	
	# of Students	# of Hours	# of Students	# of Hours	# of Students	# of Hours	# of Students	# of Hours	# of Students	# of Hours
1			1	1	8	8	1	1	2	2
2	5	10	2	4	4	8	3	6	5	10
3	65	195	55	165	103	309	121	363	124	372
4	6	24	4	16	18	72	19	76	6	24
5	10	50	3	15	10	50	8	40	3	15
6	61	366	68	408	82	492	107	642	89	534
7	15	105	20	140	19	133	16	112	7	49
8	8	64	2	16	13	104	23	184	13	104
9	40	360	37	333	50	450	60	540	52	468
10	14	140	14	140	16	160	23	230	14	140
11	8	88	7	77	14	154	13	143	14	154
12	194	2,328	182	2,184	263	3,156	316	3,792	314	3,768
13	75	975	91	1,183	108	1,404	142	1,846	116	1,508
14	86	1,204	110	1,540	117	1,638	134	1,876	136	1,904
15	539	8,085	605	9,075	627	9,405	565	8,475	627	9,405
16	257	4,112	298	4,768	254	4,064	256	4,096	279	4,464
17	94	1,598	78	1,326	79	1,343	87	1,479	92	1,564
18	156	2,808	149	2,682	173	3,114	118	2,124	126	2,268
19	12	228	4	76	1	19	4	76	4	76
20	3	60					4	80	3	60
21	8	168	5	105	3	63	2	42	7	147
22										
23	1	23								
24										
Grand Total	1,657	22,991	1,735	24,254	1,962	26,146	2,022	26,223	2,033	27,036

**Headcount by Total Student Credit Hours
(Graduate Students)**

Credit Hrs	2018		2019		2020		2021		2022	
	# of Students	# of Hours	# of Students	# of Hours	# of Students	# of Hours	# of Students	# of Hours	# of Students	# of Hours
1	1	1			1	1				
2										
3	1	6	3	9	6	18	8	24	20	60
4					6	24	1	4		
5	2	10			9	45	6	30	7	35
6	10	60	28	168	33	198	30	180	46	276
7	17	119	20	140	7	49	7	49	8	56
8	2	16			3	24	10	80	4	32
9	7	63	8	72	12	108	25	225	23	207
10	1	10	5	50	3	30	2	20		
11			2	22	5	55	1	11	2	22
12			11	132	7	84	7	84	4	48
13									1	13
14									1	14
15							1	16		
Grand Total	41	285	77	593	92	636	98	723	116	763

Student Credit Hours by Category & Residence Status

Residence	Category	2018	2019	2020	2021	2022
In-State	Extension Crd Hrs Enrolled	2,864	3,978	8,857	7,374	8,793
	Regular Crdt Hrs Enrolled	16,145	16,073	12,465	12,845	11,669
	Total Credit Hrs	19,009	20,051	21,322	20,219	20,462
Out-of-State	Extension Crd Hrs Enrolled	415	531	2,241	1,586	2,236
	Regular Crdt Hrs Enrolled	3,720	3,958	2,876	4,692	5,101
	Total Credit Hrs	4,135	4,489	5,117	6,278	7,337
Grand Total	Extension Crd Hrs Enrolled	3,279	4,509	11,098	8,960	11,029
	Regular Crdt Hrs Enrolled	19,865	20,031	15,341	17,537	16,770
	Total Credit Hrs	23,144	24,540	26,439	26,497	27,799

Degrees Conferred by Departments

Department	Level	Major	2017-18		2018-19		2019-20		2020-21		2021-22	
			Fall 2017	Spring 2018	Fall 2018	Spring 2019	Fall 2019	Spring 2020	Fall 2020	Spring 2021	Fall 2021	Spring 2022
Aviation Science and Emergency Management	Undergraduate	Aviation Science		3	2	7	9	9	3	12	6	15
		Emergency Management					1	1		3	1	1
Business Accounting and Sport Management	Undergraduate	Accounting		5	4	3	2	4		5	5	5
		Business Administration	12	14	13	14	9	10	11	22	19	25
		Sport Management	7	5	2	5	6	6	8	7	2	2
Digital Media Arts	Undergraduate	Digital Media Arts									2	2
Education	Graduate	Elementary Education									8	9
		Elementary Education (M)			2	1		5		8		
		School Administration		8	2	7		5	2		6	2
	Undergraduate	Birth through Kindergarten	3	7	3	5	4	5	5	5	1	5
		Elementary Education	3	4		6		2	3	3	5	4
		Middle Grades Education	1	1								
		Special Education, General					1		1	1	2	
English and Digital Media	Undergraduate	Communication Studies	1	2	3	5	2	2	2	3		
		English	3	5	2	2	2	3		6	2	9
Health and Human Studies	Undergraduate	Kinesiology		2	2	3	3	4	7	7	8	15
		Pharmaceutical Science	4	4	4	1		6	1		1	2
		Physical Education and Health	5	6		1						
		Psychology	4	5	5	5	5	7	7	12	8	4
		Social Work		9	5	14	5	7	3	22		21
Homeland Security	Undergraduate	Homeland Security								1		1
Mathematics, Computer Science and Engineering Technology	Graduate	Mathematics (G)	1			3	1	7	1	7	1	2
	Undergraduate	Computer Information Science	5	9	5	7	1	8		9	4	9
		Engineering Technology		5	5	6	2	5	2	6	1	9
		Industrial Technology			1							

		Mathematics	3	3	1	3		5	4	1	2	
Music and Visual Arts	Undergraduate	Graphic Design	1	6	1	8	2	2	4	4	4	6
		Music	6	3	1	7	1	3	4	3	1	3
Natural Sciences	Graduate	Biology	1	7	1	2		5		2	1	3
	Undergraduate	Biology	9	7	8	2	4	13	11	12	12	8
		Chemistry		1	1	2	1	1	1	3	1	1
Social Sciences	Undergraduate	Criminal Justice	16	18	8	15	10	10	15	19	22	19
		History	3	8	1	2	2	4	2	2		4
		Interdisciplinary Studies	4	9	8	11	9	15	25	13	15	14
		Political Science	1		1							
		Sociology	3	10	2	4	4	2	1			
Grand Total			96	166	93	151	86	156	123	198	140	200

Characteristics of Degrees Conferred

Enrollment Characteristics	2017-18		2018-19		2019-20		2020-21		2021-22	
	#	%	#	%	#	%	#	%	#	%
Headcount	262	100	244	100	242	100	321	100	340	100
Men	105	40.1	103	42.2	96	39.7	126	39.2	136	40.0
Women	157	59.9	141	57.8	146	60.3	195	60.8	204	60.0
In-State	243	92.8	227	93.0	217	89.7	278	86.6	280	82.4
Out-of-State	19	7.3	17	7.0	25	10.3	43	13.4	60	17.6
Non-Resident Alien	1	0.4	0	0	1	0.41	5	1.6	3	0.88
Unknown	23	8.8	12	4.9	12	5.0	7	2.2	17	5.0
Hispanic	5	1.9	5	2.1	9	3.7	14	4.4	15	4.4
American Indian	1	0.4	4	1.6	1	0.4	1	0.31	0	0.0
Asian			2	0.8	2	0.8	2	0.62	5	1.47
Black	180	68.7	167	68.4	162	66.9	211	65.7	211	62.1
White	50	19.1	51	20.9	52	21.5	73	22.7	68	20.0
Two or More races	2	0.8	3	1.2	3	1.2	8	2.5	20	5.9
Average GPA	3.03		3.12		3.18		3.27		3.27	

Retention Rates

Rates in the following chart reflect the cohort of first-time full-time freshmen (2012 - 2021)

Year of Entry	Number of Freshmen	Number of Year(s) After Entry					
		1	2	3	4	5	6
Retention Rates							
2012	523	72.5	56.0	49.1	25.6	8.9	3.4
2013	322	68.3	53.4	48.9	27.8	8.4	2.2
2014	204	73.5	57.4	49.8	29.2	6.2	2.4
2015	268	67.8	49.6	48.1	25.8	11.2	4.1
2016	203	73.9	58.1	46.1	22.3	5.9	3.9
2017	349	72.5	61.9	51.0	23.2	7.5	
2018	418	70.6	57.2	49.0	26.1		
2019	385	75.6	58.5	52.5			
2020	364	73.4	57.7				
2021	324	76.2					

Graduation Rates

Rates in the following chart reflect the cohort of first-time full-time freshmen (2012- 2021)

Year of Entry	Number of Freshmen	Number of Year(s) After Entry					
		1	2	3	4	5	6
Graduation Rates							
2012	523	0	0	1.1	21.1	34.9	42.4
2013	322	0	0	0.9	18.3	33.9	38.4
2014	204	0	0	3.8	21.5	38.7	44.9
2015	268	0	0	0.4	19.4	33.6	40.0
2016	203	0	0	0.5	24.3	39.1	41.9
2017	349	0	0	1.7	29.9	45.0	
2018	418	0	0	2.4	23.4		
2019	385	0	0.5	2.9			
2020	364	0	0				
2021	324	0					

Full-Time Faculty & Staff by Occupational Activity

Categories	2019	2020	2021	2022
Building and grounds cleaning and maintenance	30	31	28	26
Business and Financial Operations	28	28	28	33
Community and Social Service	2	2	1	
Computer and Mathematical	15	15	15	15
Construction and extraction	5	6	5	6
Entertainers, Performer, Sports Worker			12	14
First-Line Manager Food Prep, Serv				
Healthcare practitioners and technical	2	2	1	2
Installation, maintenance and repair	4	4	4	4
Instructional Coordinators	10	10	10	16
Legal	2	2	2	2
Librarians	4	5	4	5
Life, Physical and Social Science	15	15	15	17
Management	54	54	57	58
Miscellaneous Education, Training and Library Workers	15	16	15	12
Office and administrative support	42	41	40	40
Personal care service	3	3	4	2
Postsecondary Teacher	123	118	128	127
Pre-school, primary, secondary and special education teacher	3	3	3	3
Protective service	15	16	15	16
Sales and related	2	2	2	
Transportation and material moving	2	2	2	2
Grand Total	388	386	391	400

Source: Elizabeth City State University Office of Human Resources (HR DataMart)

Full-Time Instructional Faculty by Gender

	2018	2019	2020	2021	2022
Men	70	71	69	73	72
Women	45	52	49	55	56
Total	115	123	118	128	127

Full-Time Instructional Faculty by Highest Earned Degree

	2018	2019	2020	2021	2022
Doctorate	88	84	83	82	73
Specialist/JD	0	1	0	0	0
Master's	25	33	30	32	32
Bachelor's	2	4	3	5	3
Other	0	1	2	9	19
Total	115	123	118	128	127

Full-Time Instructional Faculty by Academic Rank

	2018	2019	2020	2021	2022
Professor	29	26	27	25	23
Associate Professor	30	27	28	28	25
Assistant Professor	25	22	23	24	29
Instructor	1	3	27	36	34
Lecturer	13	14	13	15	16
Total	115	123	118	128	127

Full-Time Instructional Faculty by Tenure Status

	2018	2019	2020	2021	2022
Tenure	53	49	46	44	44
On Track	27	23	24	25	26
Not On Track	35	51	48	59	57
Total	115	123	118	128	127

Full-Time Instructional Faculty by Ethnicity

	2018	2019	2020	2021	2022
Black	20	55	55	62	56
White	15	37	32	35	39
American Indian	1	2	2	2	2
Asian	5	17	18	15	14
Hispanic	2	4	4	4	2
Non-Resident	3	5	5	5	9
Unknown	6	3	2	5	5
Total	115	123	118	128	127

Financial Summary (Revenue)
(\$ in thousands -- 000s omitted)

Source of Income (Total)	2018	2019	2020	2021	2022
Tuition and Fees	4,014	3,468	4,567	4,772	6,661
Government Appropriations	33,007	37,895	35,553	35,390	42,557
Government Grants and Contracts	15,409	14,809	14,554	15,360	20,240
Private Gifts, Grants and Contracts	798	907	1,147	27,140	10,862
Investment Income	926	872	466	5,317	N/A
Other Core Revenues	3,260	3,775	12,420	19,029	2,427
Total Core Revenues	57,418	61,729	68,709	107,010	82,749
TOTAL	\$60,722	\$65,881	\$74,335	\$111,608	\$90,622
Source of Income (% of Total)	2018	2019	2020	2021	2022
Tuition and Fees	7.00%	6.00%	7.00%	4.00%	8.00%
Government Appropriations	57.00%	61.00%	52.00%	33.00%	51.00%
Government Grants and Contracts	27.00%	24.00%	21.00%	14.00%	24.00%
Private Gifts, Grants and Contracts	1.00%	1.00%	2.00%	25.00%	13.00%
Investment Income	2.00%	1.00%	1.00%	5.00%	0.00%
Other Core Revenues	6.00%	6.00%	18.00%	18.00%	3.00%
Total Core Revenues	100.00%	100.00%	100.00%	100.00%	100.00%

Source: IPEDS Finance

Financial Summary (Expenditures)

(\$ in thousands -- 000s omitted)

Continued

Expenditures (Total)	2018	2019	2020	2021	2022
Instruction	16,955	18,487	15,551	15,939	18,490
Research	1,112	1,081	811	910	1,080
Public Service	1,105	1,222	974	1,414	1,257
Academic Support	2,930	3,479	4,525	5,593	3,938
Institutional Support	11,899	9,588	13,426	15,348	24,195
Student Services	10,054	9,497	7,786	7,732	8,862
Other Core Expenses	4,587	4,571	8,262	10,153	13,985
Total Core Expenses	48,645	47,928	51,338	57,092	71,810
TOTAL	\$62,244	\$65,654	\$66,619	\$70,618	\$91,494
Expenditures (% of Total)	2018	2019	2020	2021	2022
Instruction	35.00%	39.00%	30.00%	28.00%	26.00%
Research	2.00%	2.00%	2.00%	2.00%	2.00%
Public Service	2.00%	3.00%	2.00%	2.00%	2.00%
Academic Support	6.00%	7.00%	9.00%	10.00%	5.00%
Institutional Support	24.00%	20.00%	26.00%	27.00%	34.00%
Student Services	21.00%	20.00%	15.00%	14.00%	12.00%
Other Core Expenses	9.00%	10.00%	16.00%	18.00%	19.00%
Total Core Expenses	100.00%	100.00%	100.00%	100.00%	100.00%

Source: IPEDS Finance

Facilities

	Total		Type of Usage											
			Classrooms		Laboratories		Library Space		Office Space		Residential		Other	
	NSF	%	NSF	%	NSF	%	NSF	%	NSF	%	NSF	%	NSF	%
001 --- MOORE HALL	24172	100	4258	17.62	3993	16.52	522	2.16	6541	27.06	-	-	8858	36.65
002 --- LESTER HALL	11579	100	2676	23.11	639	5.52	-	-	4546	39.26	-	-	3718	32.11
003 --- WILLIAMS HALL	23025	100	4361	18.94	781	3.39	-	-	4368	18.97	-	-	13515	58.7
005 --- JOHNSON HALL	18719	100	7571	40.45	4637	24.77	-	-	4228	22.59	-	-	2283	12.2
006 --- GR LITTLE LIBRARY	39178	100	-	-	-	-	27803	70.97	1283	3.27	-	-	10092	25.76
011 --- SYMERA HALL	11134	100	-	-	-	-	-	-	-	-	-	-	11134	100
012 --- CARDWELL-HOFFLER INF	4967	100	-	-	-	-	-	-	105	2.11	-	-	4862	97.89
013 --- TRIGG HALL	4968	100	-	-	-	-	147	2.96	3155	63.51	-	-	1666	33.53
014 --- HUGH CALE HALL	9910	100	-	-	-	-	528	5.33	231	2.33	6853	69.15	2298	23.19
015 --- BIAS HALL	19426	100	-	-	-	-	384	1.98	-	-	16763	86.29	2279	11.73
016 --- BUTLER HALL	16588	100	-	-	-	-	369	2.22	94	0.57	11936	71.96	4189	25.25
017 --- DOLES HALL	13191	100	-	-	-	-	881	6.68	148	1.12	9340	70.81	2822	21.39
020 --- LANE HALL	7259	100	3102	42.73	1812	24.96	-	-	1977	27.24	-	-	368	5.07
021 --- TV/TELECOMMUNICATIO N	1741	100	-	-	-	-	-	-	676	38.83	-	-	1065	61.17
023 --- SEARS BUILDING	2676	100	-	-	-	-	-	-	988	36.92	-	-	1688	63.08
025 --- RIDLEY HALL	8031	100	-	-	-	-	-	-	-	-	-	-	8031	100
026 --- BEDELL HALL	18651	100	-	-	-	-	-	-	136	0.73	-	-	18515	99.27
100 --- PRINCIPALS HOUSE	2862	100	-	-	-	-	-	-	2862	100	-	-	-	-
102 --- 2034 WEEKSVILLE	1124	100	-	-	-	-	-	-	-	-	-	-	1124	100
103 --- 2036 WEEKSVILLE	851	100	-	-	-	-	-	-	-	-	-	-	851	100
104 --- 2038 WEEKSVILLE	1124	100	-	-	-	-	-	-	-	-	-	-	1124	100
105 --- 2040 WEEKSVILLE	851	100	-	-	-	-	-	-	-	-	-	-	851	100
108 --- HERRINGTON RD RESID	1797	100	-	-	-	-	-	-	-	-	-	-	1797	100
110 --- PURCHASING	1085	100	-	-	-	-	-	-	-	-	-	-	1085	100
117 --- WAMACK HALL	18098	100	-	-	-	-	817	4.51	96	0.53	13730	75.86	3455	19.09
118 --- MITCHELL-LEWIS HALL	25280	100	-	-	-	-	870	3.44	50	0.2	19073	75.45	5287	20.91
119 --- VAUGHAN CNTR - POOL	13938	100	966	6.93	-	-	-	-	2715	19.48	-	-	10257	73.59
119A --- VAUGHAN CNTR - GYM	63694	100	2872	4.51	-	-	-	-	2331	3.66	-	-	58491	91.83
121 --- DIXON HALL	26146	100	1909	7.3	16967	64.89	-	-	922	3.53	-	-	6348	24.28
122 --- THOMAS-JENKINS HALL	8563	100	-	-	-	-	-	-	1734	20.25	-	-	6829	79.75

	Total		Type of Usage												
	NSF	%	Classrooms		Laboratories		Library Space		Office Space		Residential		Other		
			NSF	%	NSF	%	NSF	%	NSF	%	NSF	%	NSF	%	
122A --- STORAGE-WAREHOUSE	5701	100	-	-	-	-	-	-	-	-	-	-	-	5701	100
123 --- HAZ CHEM (JENKINS)	76	100	-	-	-	-	-	-	-	-	-	-	-	76	100
124 --- HAZ GASES POOL	76	100	-	-	-	-	-	-	-	-	-	-	-	76	100
125 --- MCLENDON HALL	8148	100	738	9.06	-	-	-	-	2919	35.82	-	-	-	4491	55.12
126 --- GRIFFIN HALL	12632	100	418	3.31	-	-	-	-	4684	37.08	-	-	-	7530	59.61
127 --- SLOAN HALL	6328	100	-	-	-	-	-	-	-	-	6328	100	-	-	-
128 --- MIDGETT HALL	6328	100	-	-	-	-	-	-	-	-	6328	100	-	-	-
129 --- COMPLEX UNIT C	6328	100	-	-	-	-	-	-	-	-	6328	100	-	-	-
130 --- COMPLEX UNIT D	6328	100	-	-	-	-	-	-	-	-	6328	100	-	-	-
131 --- COMPLEX UNIT E	6328	100	-	-	-	-	-	-	-	-	6328	100	-	-	-
132 --- COMPLEX UNIT F	6328	100	-	-	-	-	-	-	-	-	6328	100	-	-	-
133 --- COMPLEX UNIT G	3133	100	-	-	-	-	182	5.81	88	2.81	686	21.9	2177	69.49	-
134 --- CHANCELLOR'S RES	3707	100	-	-	-	-	-	-	-	-	-	-	3707	100	-
135 --- K.E. WHITE GRAD CTR	21550	100	-	-	-	-	-	-	1368	6.35	242	1.12	19940	92.53	-
136 --- E.V. WILKINS	2923	100	-	-	1340	45.84	-	-	654	22.37	-	-	929	31.78	-
139 --- M.D.THORPE ADMIN.	22115	100	-	-	-	-	286	1.29	14143	63.95	-	-	7686	34.75	-
142 --- CHANCELLOR RES. STGE	260	100	-	-	-	-	-	-	-	-	-	-	260	100	-
145 --- JENKINS SCIENCE BLDG	34023	100	7606	22.36	14849	43.64	445	1.31	4936	14.51	-	-	6187	18.18	-
146 --- COMMUTER CENTER	8959	100	-	-	-	-	-	-	628	7.01	-	-	8331	92.99	-
147 --- UNIVERSITY TOWER	24925	100	-	-	-	-	876	3.51	120	0.48	20006	80.26	3923	15.74	-
148 --- FINE ARTS	32133	100	1650	5.13	11997	37.34	358	1.11	3604	11.22	-	-	14524	45.2	-
149 --- ITC BUILDING	14462	100	2354	16.28	1664	11.51	710	4.91	3553	24.57	-	-	6181	42.74	-
151 --- FIELD HOUSE/PE CTR	7286	100	1357	18.62	-	-	-	-	950	13.04	-	-	4979	68.34	-
153 --- UNIVERSITY SUITES	39192	100	-	-	-	-	1953	4.98	-	-	34680	88.49	2559	6.53	-
154 --- VIKING VILLAGE	109732	100	-	-	-	-	-	-	120	0.11	77381	70.52	32231	29.37	-
155 --- STUDENT CENTER	18382	100	-	-	-	-	1463	7.96	2372	12.9	-	-	14547	79.14	-
156 --- PHARMACY COMPLEX	30115	100	10552	35.04	7991	26.53	556	1.85	4196	13.93	-	-	6820	22.65	-
157 --- GILCHRIST COMPLEX	25649	100	11608	45.26	862	3.36	605	2.36	6864	26.76	-	-	5710	22.26	-
Total	863775	100	63998	7.41	67532	7.82	39755	4.6	90385	10.46	248658	28.79	353447	40.92	-